

Willifield Way, Hampstead Garden Suburb, NW11

£1,900,000

Freehold



800 finchley road, hampstead garden suburb, london, nw11 7tj

telephone 020 8458 5000 facsimile 020 8209 2068

email [sales@litchfields.com](mailto:sales@litchfields.com) web [litchfields.com](http://litchfields.com)

offices also in crouch end & highgate

A handsome, spacious four bedroom detached house with off street parking and beautiful front and rear gardens. The property is set back from the road and very conveniently located being a short walk from Big Wood and Temple Fortune's shops, cafes, restaurants and transport facilities and 0.9 miles from Golders Green Underground. The property is presented in very good decorative condition. Viewing of this chain free house is recommended.

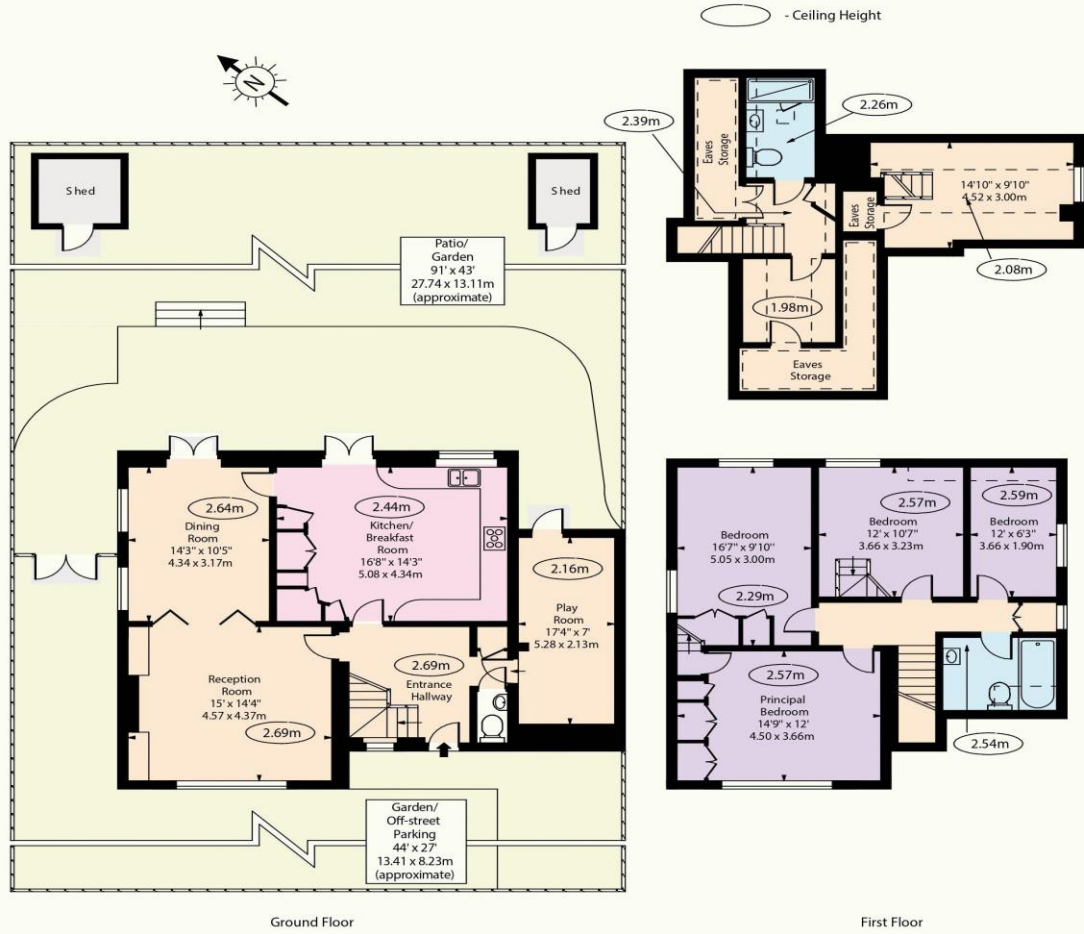




- 4 bedrooms
- Play room
- Lounge/dining room
- Kitchen/breakfast room
- 2 bathrooms
- Guest wc
- Off street parking
- Large rear garden
- EPC=D



Willifield Way, NW11 7XT



Ground Floor

First Floor

Approx Gross Internal Area 1763 Sq Ft - 163.79 Sq M

Approx Floor Area Including Restricted Heights 2050 Sq Ft - 190.45 Sq M

(Excluding Sheds)

For Illustration Purposes Only - Not To Scale Floor Plan by [www.nogaphotostudio.com](http://www.nogaphotostudio.com) Ref: No.47133  
 This floor plan should be used as a general outline for guidance only. Any intending purchaser or lessee should satisfy themselves by inspection, searches, enquiries and full survey as to the correctness of each statement. Any areas, measurements or distances quoted are approximate and should not be used to value a property or be the basis of any sale or let.