



Sheridan Walk, Hampstead Garden Suburb Borders, NW11

Freehold

£950,000



800 finchley road, hampstead garden suburb, london, nw11 7tj
telephone 020 8458 5000 facsimile 020 8209 2068
email sales@litchfields.com web litchfields.com
offices also in crouch end & highgate

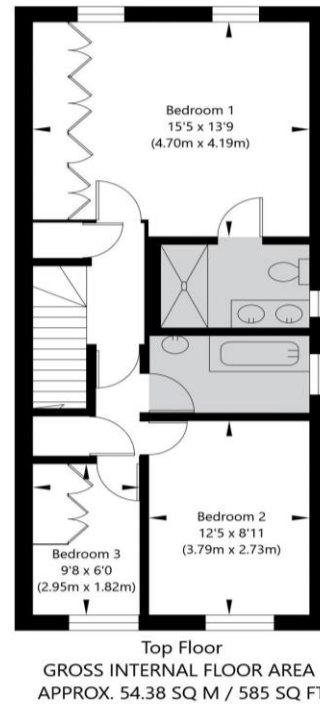
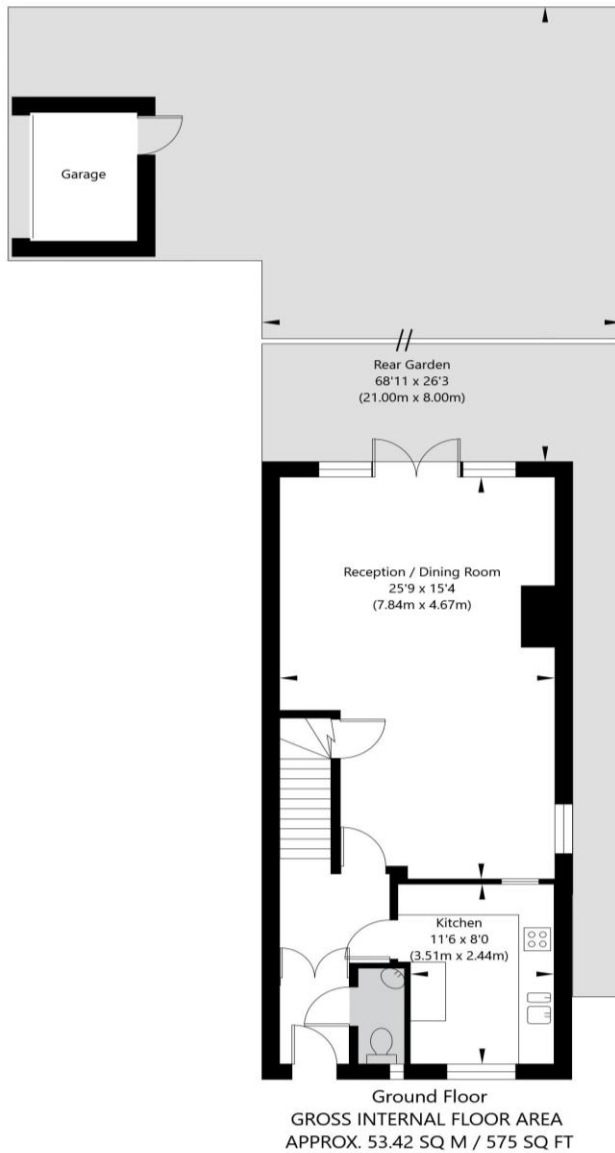
A 3 bedroom end of terrace house placed in a cul-de-sac off Temple Fortune Lane situated within a short walk to the many shops, cafes and transport facilities of Temple Fortune. Golders Green Underground is also a 15 minute walk away. The property is in need of updating benefiting from a large double reception room, a 90' south facing rear garden and a larger than average garage access at the rear via a shingled driveway off Sheridan Walk. Viewing of this chain free property is advised.

3 bedrooms | Lounge/dining room | Kitchen | Bathroom | En suite shower room | Large south facing rear garden | Large garage at rear of garden | Chain free | EPC=D





Sheridan Walk, London, NW11 7UF



APPROXIMATE GROSS INTERNAL FLOOR AREA 107.8 SQ M / 1160 SQ FT
THIS FLOOR PLAN IS FOR ILLUSTRATIVE PURPOSES ONLY AND
SHOULD BE USED FOR THIS PURPOSE BY PROSPECTIVE APPLICANTS AS ITS NOT TO SCALE.

(c) AMBERSHORE PIX LIMITED / PHOTO - VIDEO - FLOOR PLANS / 0800 999 1577 / WWW.AMBERSHOREPIX.CO.UK

Whilst every effort is made to ensure these details are accurate, all measurements given are approximate and for guidance only. We are unable to comment on the structure of the building or services and any investigations should be carried out by a qualified surveyor. We strongly advise you to ensure that all legal aspects are fully investigated by your solicitor prior to a purchase. We have not applied tests to any appliances or equipment and therefore cannot verify these are in good working order. We understand from the vendor that the fixtures and fittings listed are to be included in the sale price but these may be subject to negotiation.