



The Pantiles, Temple Fortune, NW11

Leasehold

£450,000



800 finchley road, hampstead garden suburb, london, nw11 7tj

telephone 020 8458 5000 facsimile 020 8209 2068

email sales@litchfields.com web litchfields.com

offices also in crouch end & highgate

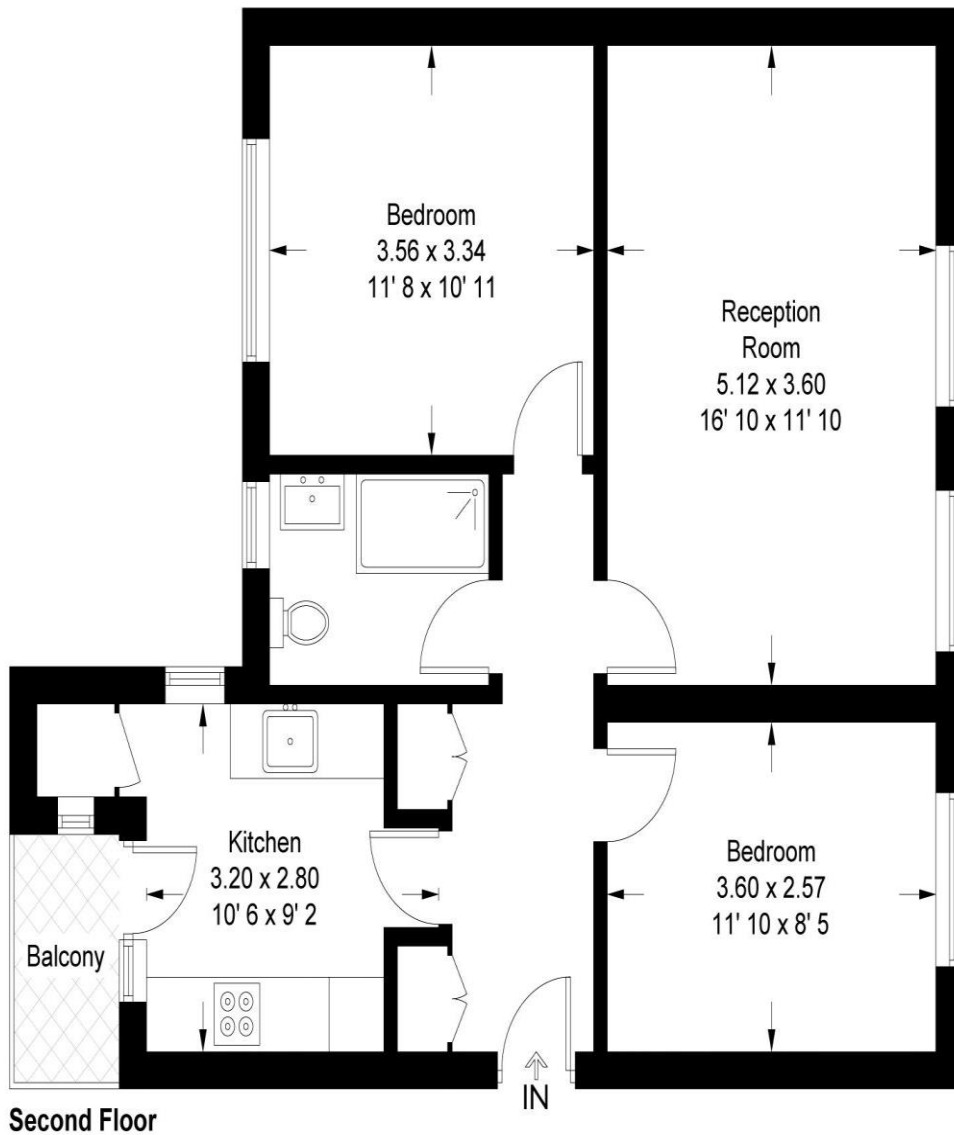
A second floor flat set in this popular Grade II Listed purpose built designed by J B F Cowper in 1934 situated within the heart of Temple Fortunes ample amenities. The property, which offers 689 sq ft, has been refurbished to an exacting standard comprising 2 double bedrooms, a large lounge, a fitted kitchen and shower room. Viewing of this fine chain free property is advised.

2 double bedrooms | Lounge | Kitchen | Shower room | In the heart of Temple Fortune | Brand newly refurbished



The Pantiles

Approximate Gross Internal Area = 689 sq ft / 64 sq m



Not to scale, for guidance only and must not be relied upon as a statement of fact
All measurements and areas are approximate only and have been prepared in
accordance with the current edition of the RICS Code of Measuring Practice

Whilst every effort is made to ensure these details are accurate, all measurements given are approximate and for guidance only. We are unable to comment on the structure of the building or services and any investigations should be carried out by a qualified surveyor. We strongly advise you to ensure that all legal aspects are fully investigated by your solicitor prior to a purchase. We have not applied tests to any appliances or equipment and therefore cannot verify these are in good working order. We understand from the vendor that the fixtures and fittings listed are to be included in the sale price but these may be subject to negotiation.