



Willifield Way, Hampstead Garden Suburb, NW11

£2,125,000

Freehold

 **litchfields**

800 finchley road, hampstead garden suburb, london, nw11 7tj

telephone 020 8458 5000 facsimile 020 8209 2068

email sales@litchfields.com web litchfields.com

offices also in crouch end & highgate



A spectacular and rare character detached home originally built as an artists studio for renowned marine artist Kenneth Shoesmith, designed by Paul Badcock and built in 1924. This stunning charming house has approximately 1,778 sq. ft. (165.2 sq. m.) boasting an outstanding double volume height reception room with a beautiful minstrels gallery overlooking it. There are superb landscaped gardens that wrap around the property giving the feeling of being in the country with total privacy and tranquillity. The property is only a 15 minute walk to the extensive amenities and transport links of Golders Green underground and a short walk to Temple Fortune and the Heath extension. Early viewing of this one of a kind house is strongly recommended to truly understand its unique charm!



Stunning Double Height Reception

3/4 Bedrooms

Family room/Bed 4

Two Bathrooms

Study

Kitchen/Breakfast room

Superb Landscaped wrap around garden

Cloakroom

Detached

EPC=D







 litchfields




 litchfields



 litchfields



 litchfields



 litchfields

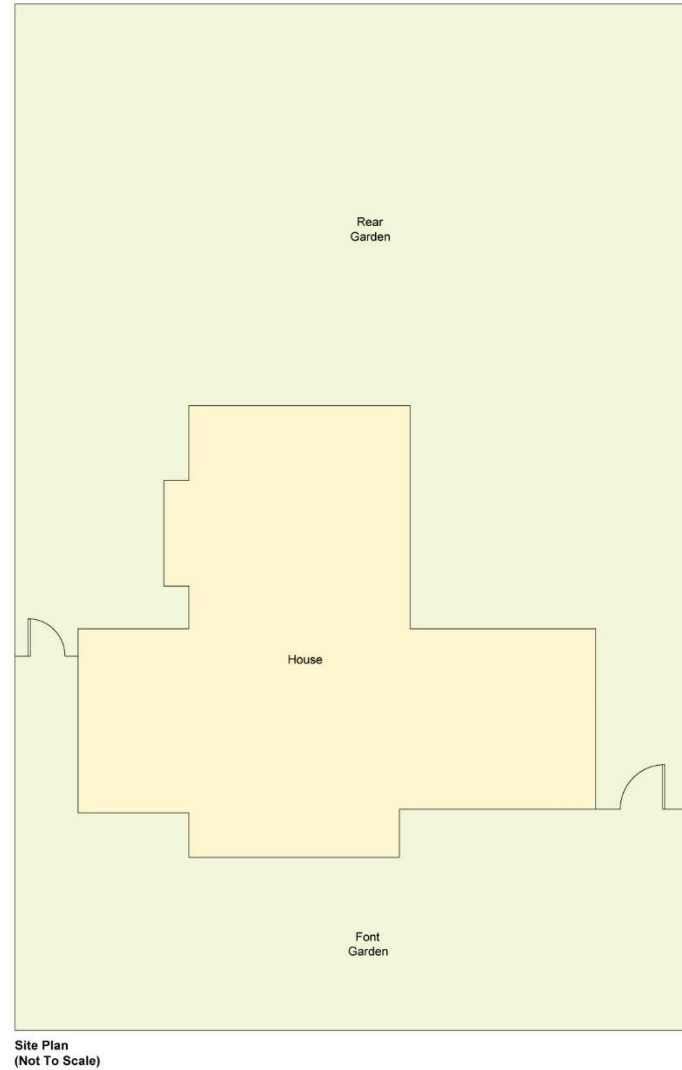
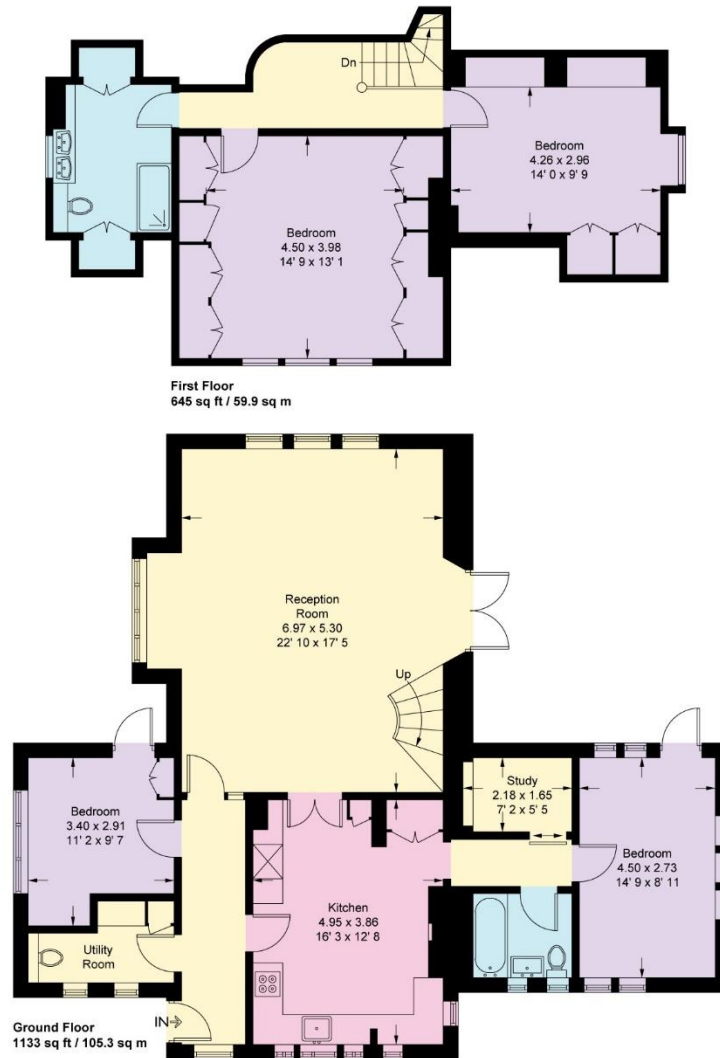


 litchfields

Willifeld Way



Approximate Gross Internal Area = 1778 sq ft / 165.2 sq m



This plan is not to scale and must be used as layout guidance only. All measurements and areas are approximate and should not be relied upon to provide accurate information. This plan must not be relied upon when making property valuations, design considerations or any other such relevant decisions. We accept no responsibility or liability (whether in contract, tort or otherwise) in relation to any loss whatsoever arising from or in connection with any use of this plan or the adequacy, accuracy or completeness of it or any information within it.