



Oakwood Road, Hampstead Garden Suburb, NW11

Freehold

£810,000

 litchfields

800 finchley road, hampstead garden suburb, london, nw11 7tj

telephone 020 8458 5000 facsimile 020 8209 2068

email sales@litchfields.com web litchfields.com

offices also in crouch end & highgate

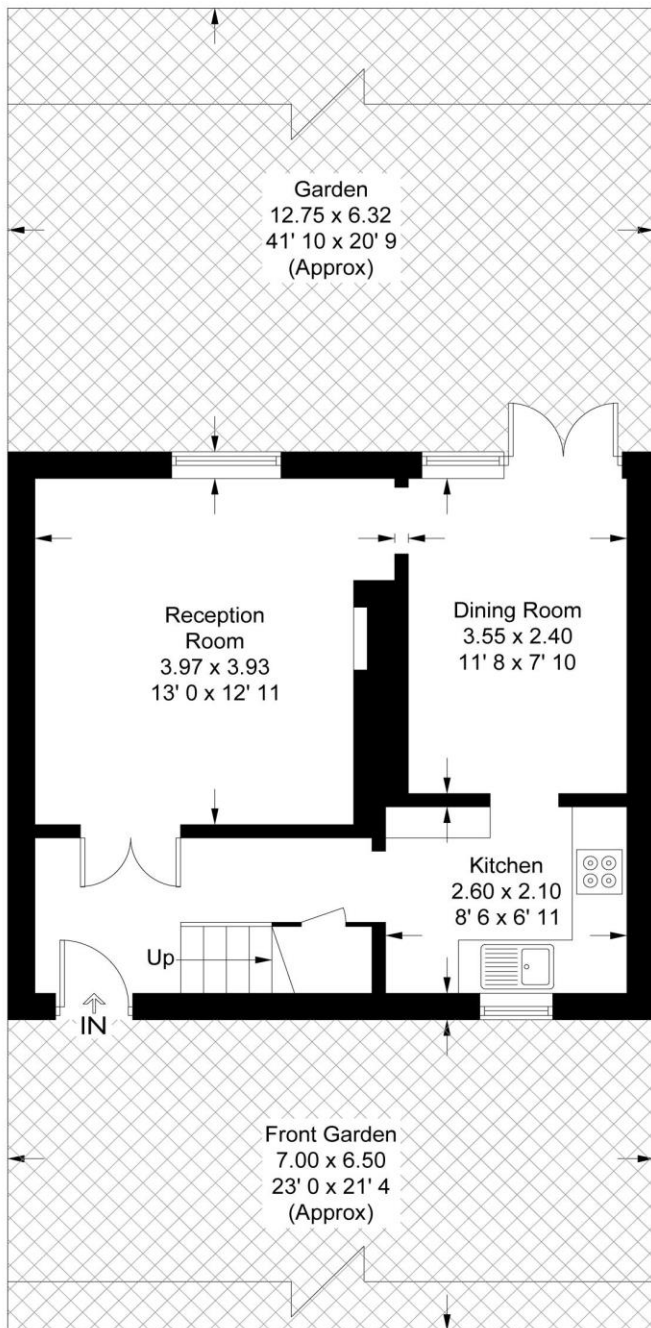
A 3 bedroom mid terraced cottage placed in this popular south side road moments from Big Wood and the many amenities of Market Place with its shops, cafes and bus routes. Featuring hard wood floors throughout the ground floor and comprising entrance hall, lounge, dining room, fitted kitchen, 2 double fitted bedrooms, further single bedroom, modern family bathroom/wc. There is a large storage space in the attic, accessed by a pull down ladder and a lovely south-east facing rear garden with patio.

3 bedrooms | Lounge | Dining room | Kitchen | Bathroom | Close to woods and parkland | Close to local amenities | South-east facing rear garden | EPC=TBA

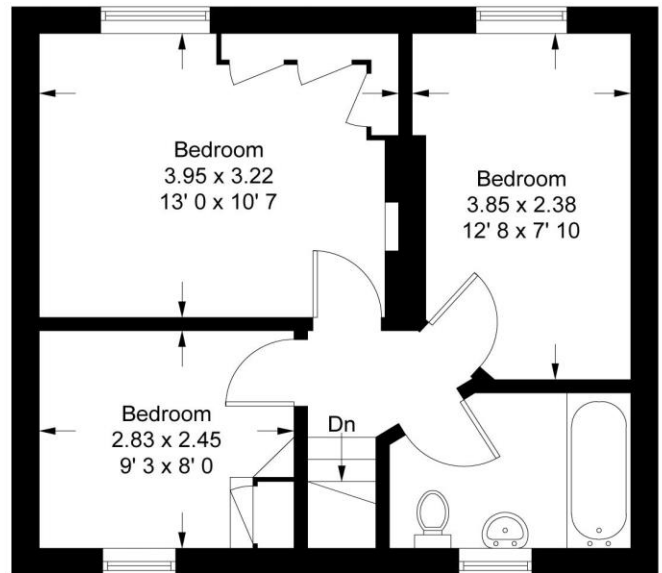


Oakwood Road

Approximate Gross Internal Area = 815 sq ft / 75.7 sq m



Ground Floor
409 sq ft / 38 sq m



First Floor
406 sq ft / 37.7 sq m

This plan is not to scale and must be used as layout guidance only. All measurements and areas are approximate and should not be relied upon to provide accurate information. This plan must not be relied upon when making property valuations, design considerations or any other such relevant decisions. We accept no responsibility or liability (whether in contract, tort or otherwise) in relation to any loss whatsoever arising from or in connection with any use of this plan or the adequacy, accuracy or completeness of it or any information within it.

Whilst every effort is made to ensure these details are accurate, all measurements given are approximate and for guidance only. We are unable to comment on the structure of the building or services and any investigations should be carried out by a qualified surveyor. We strongly advise you to ensure that all legal aspects are fully investigated by your solicitor prior to a purchase. We have not applied tests to any appliances or equipment and therefore cannot verify these are in good working order. We understand from the vendor that the fixtures and fittings listed are to be included in the sale price but these may be subject to negotiation.