



Regents Park Road, Finchley, N3

Weekly Rental Of £825



800 finchley road, hampstead garden suburb, london, nw11 7tj

telephone 020 8458 5000 facsimile 020 8209 2068

email sales@litchfields.com web litchfields.com

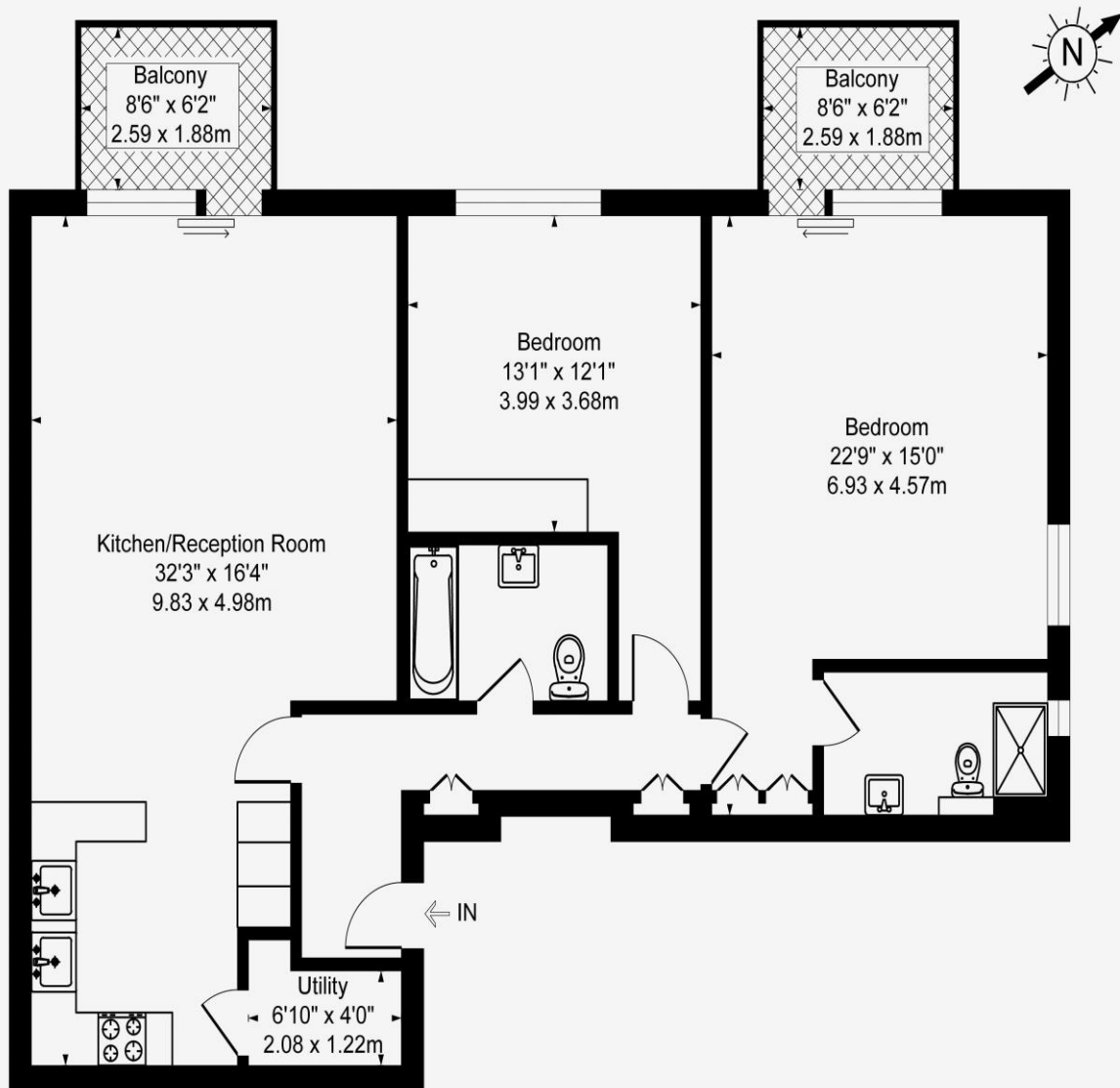
offices also in highgate

A fantastic opportunity to rent this recently built, ultra luxury 1st floor apartment with lift and secure underground parking space. Boasting two large balconies off the reception and master bedroom overlooking College Farm. Built to the highest of standards with two contemporary bathrooms (1 en-suite), stunning bespoke kitchen open plan with a spacious reception room and a utility room. Further features include comfort cooling, speaker system and superb herringbone parquet wood floors throughout this lifestyle home. Short walk to both Finchley Central and Temple Fortune on the Finchley Road. Viewing is a must! Unfurnished.

Recently built boutique apartment block **MUST SEE**** | Ultra luxury large Two double bed flat | Two superb bathrooms (1 en-suite) | Oversized reception room | Stunning open plan kitchen | Herringbone wood floors & Comfort cooling | Lift | Secure underground parking space | Two large balconies overlooking College Farm and opposite shops & Buses | Unfurnished |**



Regents Park Road, London N3
Approximate Gross Internal Area
1184 sq ft - 110 sq m



First Floor

Illustration for identification purposes only, not in scale



