



North Hill, Highgate, N6 Weekly Rental Of £1,575



800 finchley road, hampstead garden suburb, london, nw11 7tj

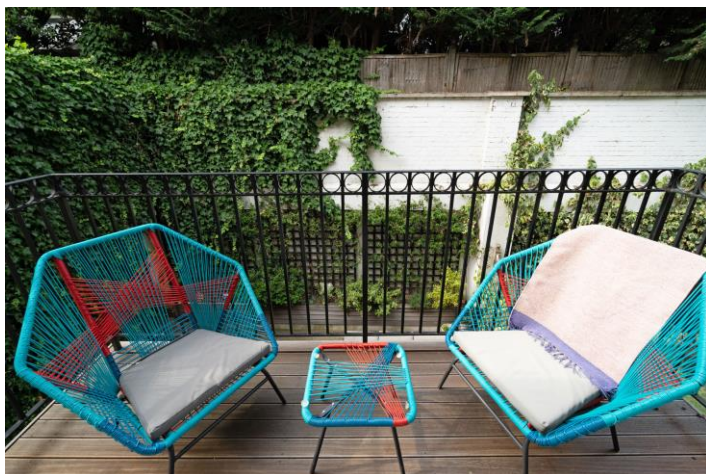
telephone 020 8458 5000 facsimile 020 8209 2068

email sales@litchfields.com web litchfields.com

offices also in crouch end & highgate

An immaculate semi detached five bedroom modern built family home (c.2426 sq ft). The house is set back from the road behind electronic gates with one off street parking space. Providing generous accommodation over four floors and finished to a high standard throughout including, a Poggenpohl fitted kitchen/breakfast room, solid oak staircases and floors and doors, double glazing, excellent insulation throughout. Further benefits include fitted Italian 'Estel' wardrobes in the bedrooms and high quality porcelain tiles in the bathrooms. The super master bedroom suite has an en-suite bathroom as well as a dressing room with bespoke shelving and hanging space. The accommodation comprises five bedrooms, four bathrooms, two reception rooms, a utility room on the first floor, two separate w.c's and a rear patio garden. Conveniently located close to Highgate Village, Highgate tube station and the delights of Kenwood and Hampstead Heath. Unfurnished. EPC - C.

Modern built Semi-detached Family Home | Two Spacious Reception Rooms | Five Bedrooms | Four Bathrooms (3 En-Suite) | Modern Poggenpohl Kitchen/Breakfast Room | Rear Garden & Balcony | Utility Room & two Guest Cloakrooms | Off Street Parking behind Security Gates x 1 car | Close to Village, Tube and the Heath | Unfurnished | EPC - C

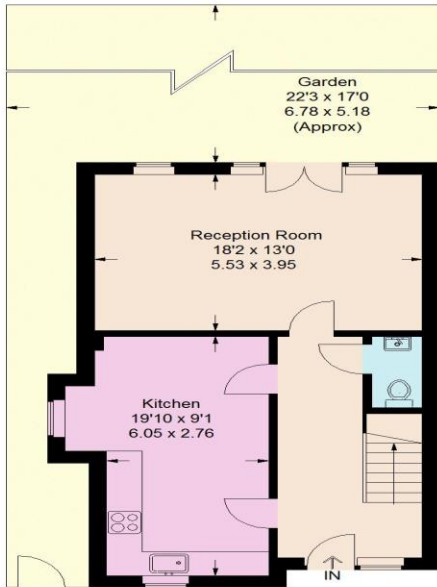


North Hill

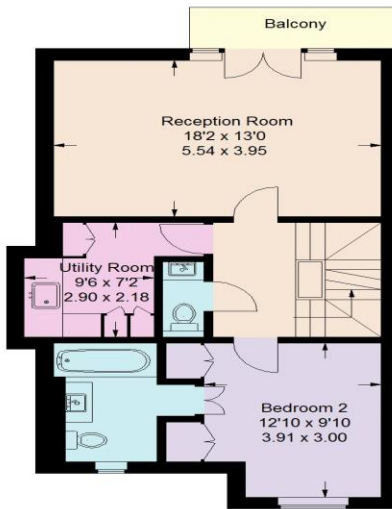
Approximate Gross Internal Area.
(Including Eaves / Excluding Reduced Headroom)
2426 sq ft / 225.3 sq m



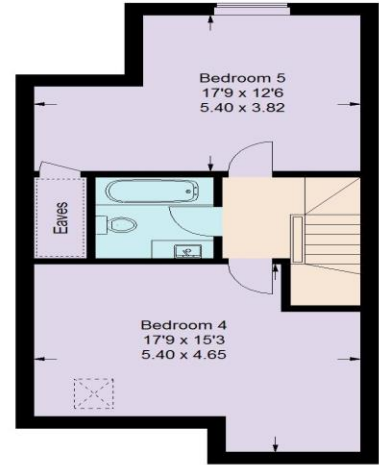
= Reduced headroom below 1.5 m / 5'0



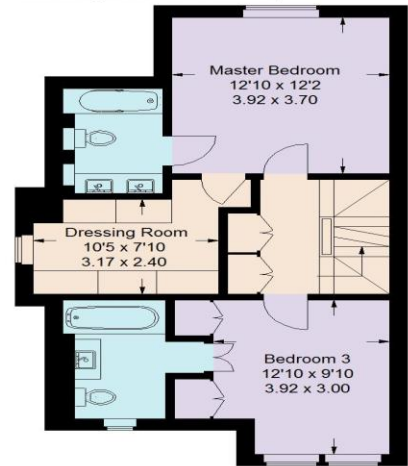
Ground Floor = 601 sq ft / 55.8 sq m



First Floor = 643 sq ft / 59.7 sq m



Third Floor = 576 sq ft / 53.5 sq m
(Including Eaves / Excluding Reduced Headroom)



Second Floor = 606 sq ft / 56.3 sq m

Illustration for identification purposes only, measurements are approximate, not to scale.

