



411 Excelsior Works, Hulme Hall Road, Manchester,

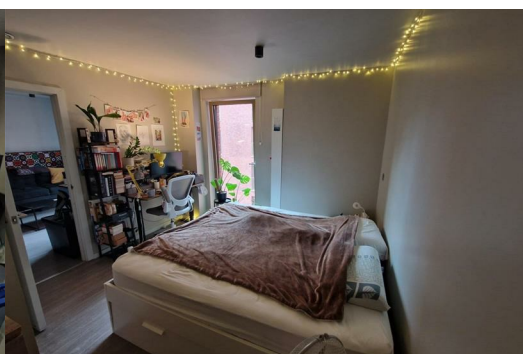
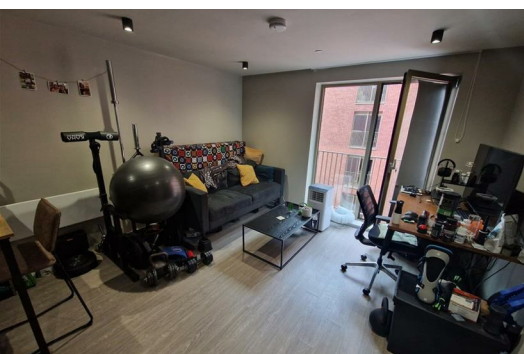
£1,050 Per Month



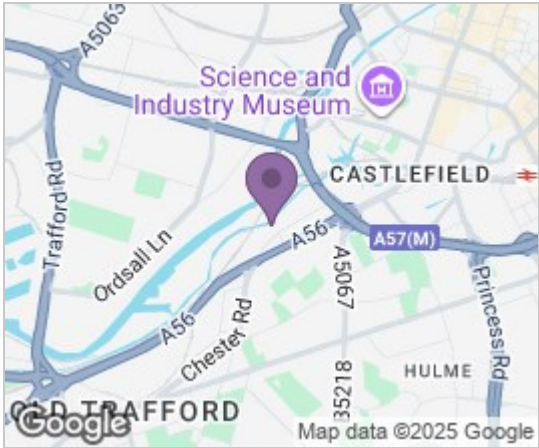
This stunning 1 bedroom apartment is located on the 4th floor of Excelsior Works. This spacious apartment benefits from a large open plan living area, as well as floor to ceiling windows providing the property with natural light throughout the day.

With this property, the luxury goes beyond the inside the flat, as each tenant is provided with access to a communal roof-garden. Designed to display the panoramic views of the Manchester skyline, Castlefield Basin and Bridgewater Canal. Further benefiting from a 24 hour concierge service for all tenants.

Additionally, this property provides quick access to both Manchester city centre and Media City, through local transportation routes such as the Metro-link and bus-routes which are located only a short walk away, opening the town up for numerous occasions.



Area Map



Floor Plans



Energy Efficiency Graph



These particulars, whilst believed to be accurate are set out as a general outline only for guidance and do not constitute any part of an offer or contract. Intending purchasers should not rely on them as statements of representation of fact, but must satisfy themselves by inspection or otherwise as to their accuracy. No person in this firms employment has the authority to make or give any representation or warranty in respect of the property.