



## 49 Delaney Building, Derwent Street, Salford, M5 4SR

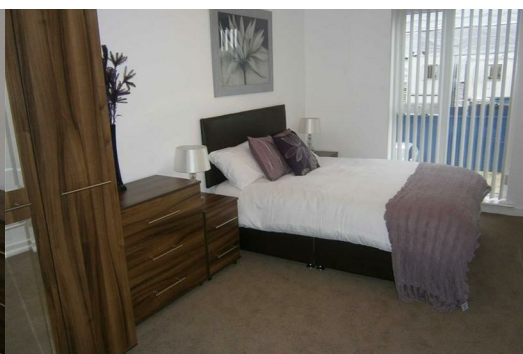
£1,200 Per Calendar Month



1 x parking space included - A spacious two double bedroom apartment within Lowry Wharf, a recently completed development perfectly located between Manchester city centre and Salford Quays. Providing excellent access to the outer ring road and only a short walk from Deansgate.

This two bedroom apartment offers a spacious open-plan living space, fully fitted kitchen with gloss units, fully tiled master bathroom and en-suite shower room to the master bedroom - Offered fully furnished and including secure parking.

Close to local amenities including Sainsbury's supermarket, a large retail park and with the city centre no more than a 15 minute walk, Public transport links are conveniently close by and access to the M602 / M62 / M60 motorway network are moments away.



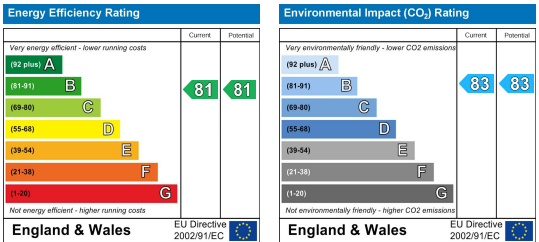
Area Map



Floor Plans



Energy Efficiency Graph



These particulars, whilst believed to be accurate are set out as a general outline only for guidance and do not constitute any part of an offer or contract. Intending purchasers should not rely on them as statements of representation of fact, but must satisfy themselves by inspection or otherwise as to their accuracy. No person in this firms employment has the authority to make or give any representation or warranty in respect of the property.