



13 Bolton Court, Leeds, LS14 6NB

£950 Per Month

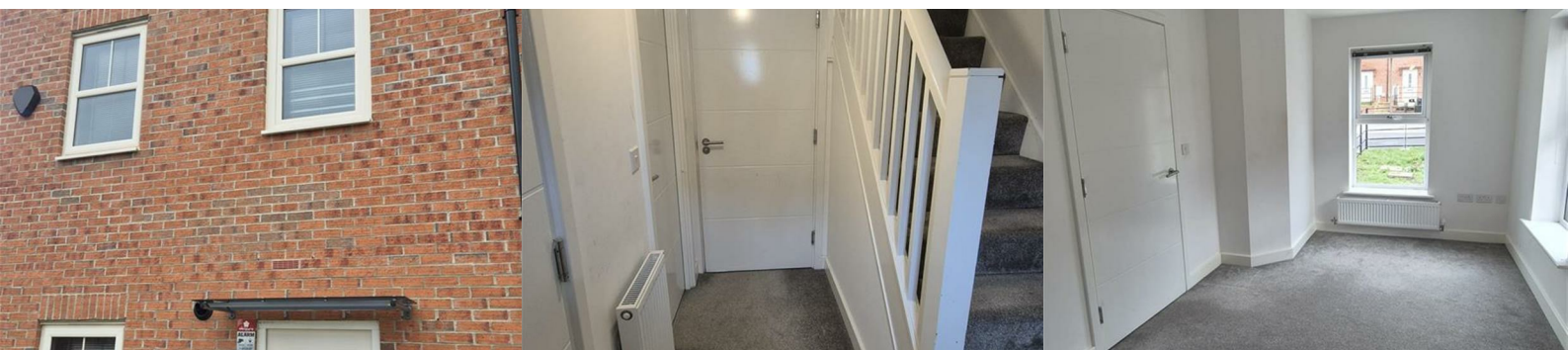


Beyond Property are delighted to offer this 2 bedroom Townhouse to the market.

This property boasts plenty of living space over 3 floors and is finished beautifully throughout. With 2 bedrooms and two 3 piece suite bathrooms this really is the perfect family home located just outside of the Leeds City Centre.

In Brief the property has a large living area and fully fitted kitchen fitted to a very high standard, two double bedrooms, and has gas central heating.

Referencing Requirements:
Full Time Employed



Full description

Cherish property are delighted to offer this BRAND NEW 2 bedroom Townhouse to the market.

This property boasts plenty of living space over 3 floors and is finished beautifully throughout. With 2 bedrooms and two 3 piece suite bathrooms this really is the perfect family home located just outside of the Leeds City Center.

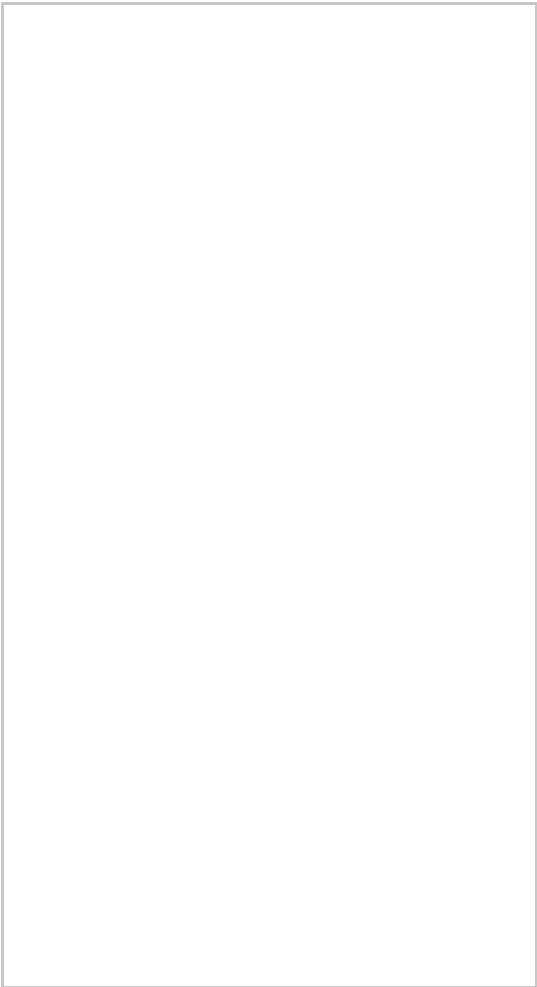
In Brief the property has a large living area and fully fitted kitchen fitted to a very high standard, two double bedrooms, and has gas central heating.

This property is available Immediately and we strongly recommend you get your viewing booked in ASAP to avoid disappointment

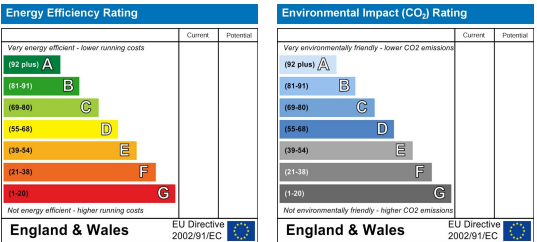
Area Map



Floor Plans



Energy Efficiency Graph



These particulars, whilst believed to be accurate are set out as a general outline only for guidance and do not constitute any part of an offer or contract. Intending purchasers should not rely on them as statements of representation of fact, but must satisfy themselves by inspection or otherwise as to their accuracy. No person in this firms employment has the authority to make or give any representation or warranty in respect of the property.