

Tel: 01932 351986
 Email: info@greenandparry.com



Gaveston Close, West Byfleet, KT14 7HE

£565,000



Green and Parry are proud to present to the market a lovely 4 bedroom semi detached family home, positioned in a quiet cul-de-sac in the heart of Byfleet Village and a short walk to the local Village Primary School.

The property has a large drive for 2 cars and a garage. On entering the property there is a large square hallway with a cloakroom. The hallway leads to a large sitting room with large windows to the front and large windows to the rear over-looking the lovely private rear garden. The kitchen has an integrated oven and 4 ring gas burner, dish-washer and a good selection of kitchen cupboards. The property has 3 double bedrooms, the main bedroom over looks the front and benefits from fitted wardrobes and an en-suite shower room. 2 further double bedrooms also benefit from fitted wardrobes. Bedroom 4 is a good size single and there is also a family bathroom. The rear garden is a large and secluded.

The property could be extended (STPP).

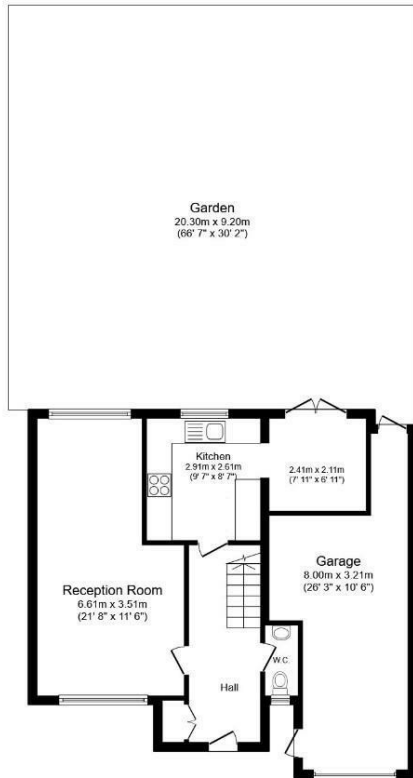
This property is close to all local amenities with the larger superstores Tesco, Marks and Spencer, Lidl and TK Max a short drive away.



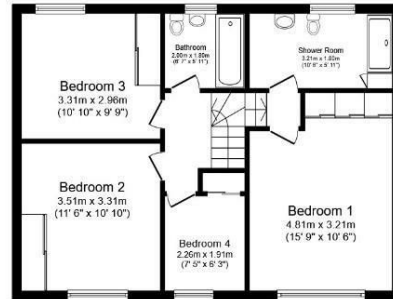
97 High Road, Byfleet, Surrey, KT14 7QX

Tel: 01932 351986 Email: info@greenandparry.com www.greenandparry.com

Floor Plan



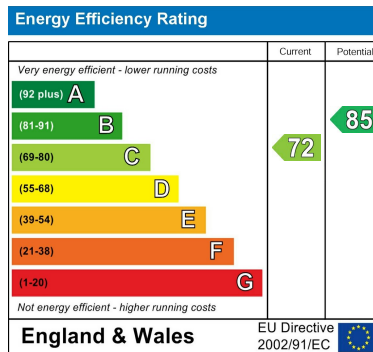
Ground Floor



First Floor

Total floor area 123.2 m² (1,326 sq.ft.) approx

This plan is for illustration purposes only and may not be representative of the property. Plan not to scale. Powered by PropertyBox



These particulars, whilst believed to be accurate are set out as a general outline only for guidance and do not constitute any part of an offer or contract. Intending purchasers should not rely on them as statements of representation of fact, but must satisfy themselves by inspection or otherwise as to their accuracy. No person in this firms employment has the authority to make or give any representation or warranty in respect of the property.