

BARTON FLEMING

— INDEPENDENT ESTATE AGENTS —



**8 Epsom Way, Kingsmere,
Bicester, Oxfordshire. OX26 1BN**

BARTON FLEMING

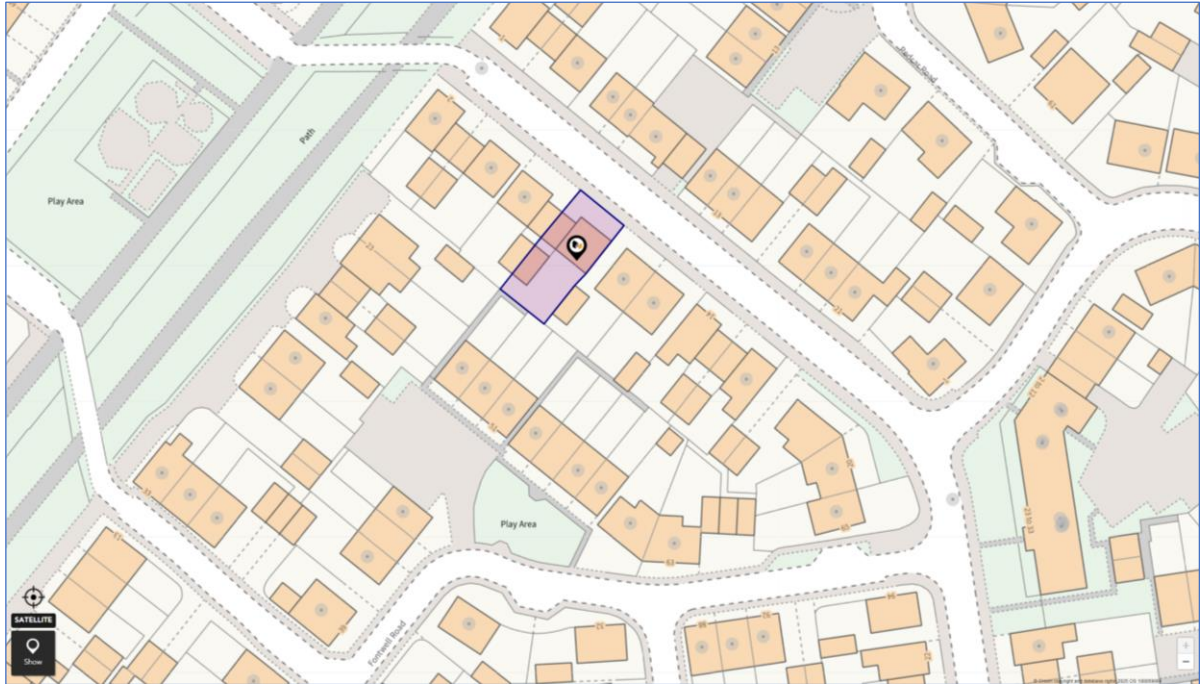
INDEPENDENT ESTATE AGENTS

Web: www.bartonfleming.co.uk
E-mail: info@bartonfleming.co.uk
62 North Street, Bicester. OX26 6NF

Tel: Bicester (01869)

249922

**8 Epsom Way, Kingsmere,
Bicester, Oxon. OX26 1BN**



Four Bedroom House with the Garage converted to a Luxury 17 sq m Garden Office with two sets of bi-fold doors and a large boarded loft for storage. Hall, Cloakroom, Utility Cupboard, Living Room, 6m wide Kitchen Diner, Bathroom, Four Bedrooms, En-Suite, Carport, Driveway Parking and South-West Facing Garden.

FREEHOLD

Offers in Excess of: £ 525,000

- ❖ Sloping Open Porch, Entrance Hall
- ❖ Cloakroom, Utility Cupboard with plumbing for washer
- ❖ Living Room
- ❖ Kitchen Diner with French Doors to the garden
- ❖ Landing, Main Bathroom,
- ❖ Four Bedrooms, En-Suite Shower Room
- ❖ South-West Facing Garden
- ❖ Garage converted to 17 sq m Luxury Garden Office
- ❖ Car Port secured by double doors, Driveway Parking.

VIEWING
APPOINTMENT:

DAY:

TIME:

BARTON FLEMING

INDEPENDENT ESTATE AGENTS

Web: www.bartonfleming.co.uk
E-mail: info@bartonfleming.co.uk
62 North Street, Bicester. OX26 6NF

Tel: Bicester (01869)

249922

Key Facts for Buyers:

EPC: Rating of B (83).

Council Tax: Band D Approx. £2,464 pa.

Ground Floor:

SLOPING OPEN PORCH:

Outside courtesy light, part glazed security front door to:-

ENTRANCE HALL: 9'4 x 6'5.

Plain plaster ceiling, central heating thermostat, radiator, strip vinyl flooring, staircase and under stairs recess.

UTILITY CUPBOARD:

Power & plumbing for washing machine.

CLOAKROOM: 5'11 x 2'10.

Side aspect PVC window, plain plaster ceiling, extractor fan, radiator, strip vinyl flooring, radiator, dual flush close coupled WC, pedestal wash hand basin.

LIVING ROOM: 13'2 x 9'9.

Front aspect PVC window, plain plaster ceiling, strip vinyl flooring, TV recess, recessed radiator, dimmer switch.

KITCHEN-DINER: 19'10 x 12'5 narrowing to 8'7.

Rear aspect PVC French doors to the garden, rear aspect PVC window, plain plaster ceiling, down lighting, strip vinyl flooring, recessed radiator, space for table & six chairs. Range of tall, base and wall units with roll-edge laminate worktops and tiled surrounds, 1000mm base unit with two 500mm doors and 1000mm cutlery drawer over, integrated dishwasher, 800mm x 800mm corner base unit with two 300mm doors, stainless steel bin inset into the countertop, 600mm drawers, 760mm 4-ring induction hob, 900mm extractor over, 300mm base unit, stainless steel & glass fan oven-grill, 2nd 600mm base unit, 1000+mm space for wide fridge freezer.

First Floor:

LANDING:

Plain plaster ceiling, large loft hatch with drop-down ladder (*full length central boarding & light*), Oak flooring, radiator.

BATHROOM: 7'0 x 6'4.

Plain plaster ceiling, extractor fan, down lighting, Oak flooring, radiator, bath with mixer tap and thermostatic shower over with rain head & second head plus sliding support, screen, dual flush close coupled WC, round ceramic wash hand basin on stand.

BEDROOM ONE: 10'0 + wardrobe x 9'11.

Front aspect PVC window, plain plaster ceiling, down lighting, Oak flooring, wall light points, wall-to-wall 2m long wardrobe, recessed radiator, dimmer switch.

EN-SUITE: 9'7 x 4'11.

Front aspect PVC window, plain plaster ceiling, extractor fan, down lighting, Oak flooring, chrome heated towel rail, 1170mm x 740mm shower enclosure with thermostatic shower and rain head plus second head and sliding head support, oval porcelain wash hand basin on wide stand.

BEDROOM TWO: 17'6 x 9'8.

Front and rear aspect PVC windows, plain plaster ceiling, loft hatch, Oak flooring, two radiators.

BEDROOM THREE: 9'10 narrowing to 6'4 x 10'3 narrowing to 6'6.

Rear aspect PVC window, plain plaster ceiling, down lighting, recessed radiator, Oak flooring.

BEDROOM FOUR: 9'5 x 6'4.

Rear aspect PVC window, plain plaster ceiling, down lighting, recessed radiator, Oak flooring.

Outside:

FRONT GARDEN: Refer to photograph.

CARPORT: 17'5 x 9'10.

Secured from the front with a pair of doors. Driveway parking in front.

REAR GARDEN:

South-West facing, tap, patio.

LUXURY GARDEN OFFICE: 18'9 x 8'10.

Originally the garage, now lined with insulation and plasterboard walls & ceiling, metal cased RCD/MCB electricity consumer unit, 3-pane bifold door and further door to make 4 panes, 2nd 3-pane bi-fold door, plain plaster ceiling, downlighting, PVC window, Infa-Red room heater (*disguised as a picture*), wooden flooring, large loft access with drop down ladder (*boarded to the centre with OSB board (stronger than MDF or chipboard) & light*).

BARTON FLEMING

INDEPENDENT ESTATE AGENTS

Web: www.bartonfleming.co.uk

E-mail: info@bartonfleming.co.uk

62 North Street, Bicester. OX26 6NF

Tel: Bicester (01869)

249922



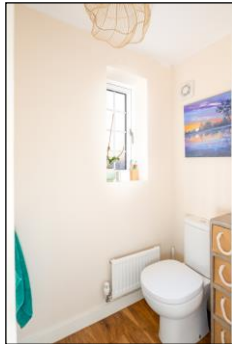
Front



Hall



Cloakroom



Kitchen Diner



Kitchen Diner



Kitchen Diner



Living Room



Living Room

BARTON FLEMING

INDEPENDENT ESTATE AGENTS

Web: www.bartonfleming.co.uk

E-mail: info@bartonfleming.co.uk

62 North Street, Bicester. OX26 6NF

Tel: Bicester (01869)

249922



Bathroom



Bedroom One



Bedroom One



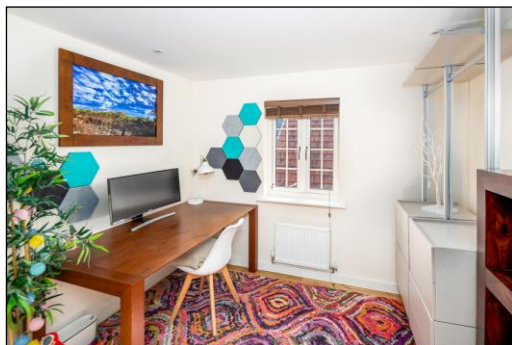
Bedroom One



En-Suite to bedroom 1



Bedroom Two



Bedroom Two



Bedroom Two

BARTON FLEMING

INDEPENDENT ESTATE AGENTS

Web: www.bartonfleming.co.uk

E-mail: info@bartonfleming.co.uk

62 North Street, Bicester. OX26 6NF

Tel: Bicester (01869)

249922



Bedroom Two



Bedroom Four



Bedroom Three



Bedroom Three



Luxury Garden Office

BARTON FLEMING

INDEPENDENT ESTATE AGENTS

Web: www.bartonfleming.co.uk

E-mail: info@bartonfleming.co.uk

62 North Street, Bicester. OX26 6NF

Tel: Bicester (01869)

249922



Rear Garden and 17 sq m Luxury Garden Office



Luxury Garden Office



Luxury Garden Office



Luxury Garden Office



Rear Garden

BARTON FLEMING

INDEPENDENT ESTATE AGENTS

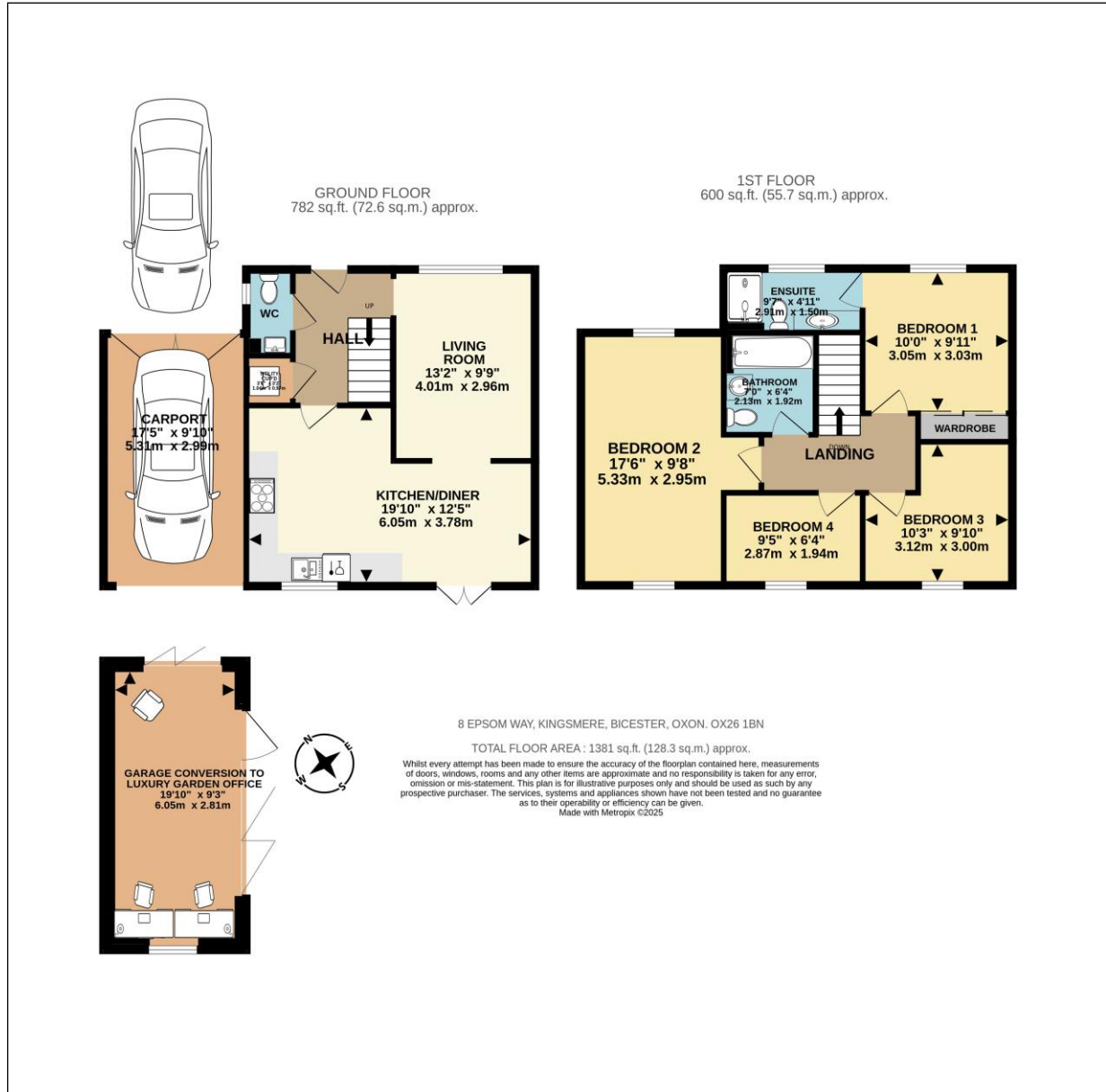
Web: www.bartonfleming.co.uk

E-mail: info@bartonfleming.co.uk

62 North Street, Bicester. OX26 6NF

Tel: Bicester (01869)

249922



These particulars do not constitute any part of an offer or a contract. Whilst every care has been taken to ensure accuracy, no responsibility for errors or mis-description is accepted. Any intending purchaser must satisfy himself by inspection or otherwise as to the correctness of each of the statements in these particulars. The vendor does not make or give and neither Barton Fleming nor any person in their employment, has authority to make or give any representation or warranty whatsoever in relation to this property. Land Registry Plans are provided as guidance only and while LRP documents are generated from what is registered at the point at when the plans are downloaded for use in these particulars, they are not guaranteed to represent the property title at any given moment. Buyers should satisfy themselves through their solicitor as to the accuracy of the land registration at any given moment.