

BARTON FLEMING

— INDEPENDENT ESTATE AGENTS —



**17 Bainton Road, Bucknell
Bicester, Oxfordshire. OX27 7LT**

BARTON FLEMING

INDEPENDENT ESTATE AGENTS

Web: www.bartonfleming.co.uk
E-mail: info@bartonfleming.co.uk
62 North Street, Bicester. OX26 6NF

Tel: Bicester (01869)

249922

17 Bainton Road, Bucknell, Bicester, Oxfordshire. OX27 7LT



Charming Three Bedroom Cottage with Family-cum-Dining Room Extension open plan to the Kitchen and Study Area. The property has been configured with a Self-Contained Annexe Bedroom Suite, leaving the remainder as a two or three bedroom home.

FREEHOLD

£ 500,000

- ❖ Heart of Village Location
- ❖ Entrance Hall, Re-fitted Cloakroom
- ❖ Living Room (also could be used as another bedroom)
- ❖ Kitchen open plan to: Family-cum-Dining Room open plan to Study Area
- ❖ Landing
- ❖ Bedrooms 2 and 3 with vaulted ceilings & exposed beams
- ❖ Re-fitted Bathroom with Jacuzzi bath & vaulted ceiling with beams
- ❖ Self-Contained Bedroom/En-Suite/Wardrobe Annexe with bi-fold doors
- ❖ Storage Shed

BARTON FLEMING

INDEPENDENT ESTATE AGENTS

Web: www.bartonfleming.co.uk
E-mail: info@bartonfleming.co.uk
62 North Street, Bicester. OX26 6NF

Tel: Bicester (01869)

249922

Ground Floor:

ENTRANCE HALL:

Separates the house from the annexe. Doors to garden, annexe and main part of the house, plain plaster ceiling.

Annexe:

ANNEXE BEDROOM SUITE:

Bedroom: 12'11 x 10'2.

Rear aspect bi-fold doors to the garden, plain plaster ceiling, LED downlighting, radiator, digital thermostat, TV point.

En-Suite: 8'3 x 3'3.

Side aspect window, plain plaster ceiling, extractor fan, heated towel rail, vinyl flooring, dual flush close coupled WC, wash hand basin, shower enclosure with multi-head shower plus hand-held shower.

Garden: Refer to photo.

Main House:

ENTRANCE HALL:

Plain plaster ceiling, RCD/MCB electric consumer unit, radiator, staircase.

CLOAKROOM:

Side aspect PVC window, radiator, vinyl flooring, dual flush close coupled WC, wash hand basin and cupboard under.

LIVING ROOM: 13'1 x 11'0

Triple front aspect window, plain plaster ceiling, wall-to-wall storage, radiator, brick fireplace and built-in cupboards into each recess, TV and satellite connections.

REFITTED KITCHEN (13'8 x 8'10) open plan to FAMILY/DINING ROOM (18'8 x 8'7).

Kitchen Area:

Plain plaster ceiling, LED downlighting, vinyl flooring, radiator, range of base and eye level Howdens units with mirror fleck off-white Quartz worksurfaces and upstands, 1½ bowl undermounted sink, integrated dishwasher, integrated freezer, corner unit with kidney trays, 500mm cutlery and pan drawers, integrated fridge, integrated wine chiller, brick fireplace with all electric 'Belling' range cooker (*four induction rings and warming*

plate, three ovens (one with grill capacity))), further tall units with integrated microwave, breakfast bar.

Family/Dining Room: Side aspect PVC French doors to garden, 'Velux' window, click laminate flooring, radiator, TV point.

OPEN PLAN STUDY: 8'9 x 6'10

Side aspect PVC window, rear aspect PVC window, 'Velux' skylight, radiator, double dimmer switch, click laminate flooring.

First Floor:

LANDING:

Side aspect window, airing cupboard enclosing LPG fired 'Glowworm' boiler, plain plaster ceiling.

RE-FITTED BATHROOM:

Front aspect PVC window, vaulted ceiling with beam, vinyl flooring, two heated towel rails, 'Jacuzzi' bath with centre tap, multi-head shower plus hand-held shower, screen, marble tiling, dual flush close coupled WC, bidet, wash hand basin, TV point.

BEDROOM TWO: 12'10 x 9'0

Front aspect PVC window, vaulted ceiling with beam, original fireplace, TV point.

BEDROOM THREE: 9'0 x 8'8

Rear aspect PVC window, vaulted ceiling and beam, radiator, original fireplace, built-in bulkhead cupboard.

Outside:

FRONT GARDEN: Refer to photograph.

Storage Shed (*see floor plan*).

PARKING:

Off-road parking.

REAR GARDEN: Refer to photographs

NOTE: Hot tub available by separate negotiation.

Key Facts for Buyers:

Council Tax Band C - £1,900 per annum approx.
EPC: Rating F (35).

BARTON FLEMING

INDEPENDENT ESTATE AGENTS

Web: www.bartonfleming.co.uk

E-mail: info@bartonfleming.co.uk

62 North Street, Bicester. OX26 6NF

Tel: Bicester (01869)

249922



Cloakroom and Staircase



Living Room



Living Room



Kitchen



Living Room



Kitchen



Kitchen



Kitchen and Dining Area

BARTON FLEMING

INDEPENDENT ESTATE AGENTS

Web: www.bartonfleming.co.uk

E-mail: info@bartonfleming.co.uk

62 North Street, Bicester. OX26 6NF

Tel: Bicester (01869)

249922



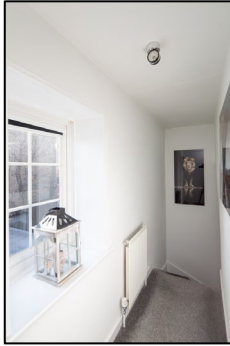
Dining Area



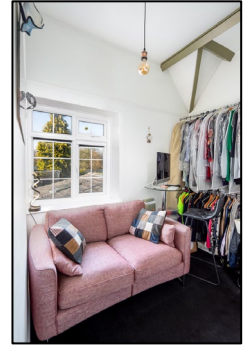
Family Area



Landing



Bedroom Three



Bedroom Two



Bedroom Two



Spa Bath



Front Garden

BARTON FLEMING

INDEPENDENT ESTATE AGENTS

Web: www.bartonfleming.co.uk

E-mail: info@bartonfleming.co.uk

62 North Street, Bicester. OX26 6NF

Tel: Bicester (01869)

249922



Front Garden



Rear Garden



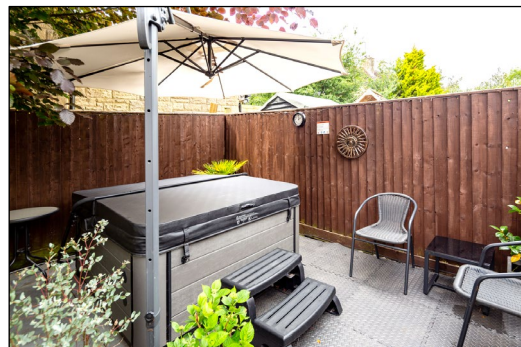
Rear Garden



Rear Garden



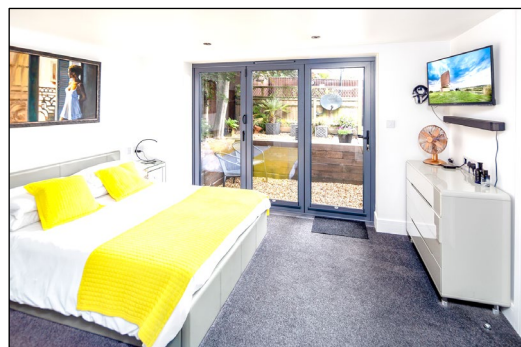
Rear Garden



Hot Tub Area (hot tub available separately)



Annexe Bedroom



Annexe Bedroom

BARTON FLEMING

INDEPENDENT ESTATE AGENTS

Web: www.bartonfleming.co.uk

E-mail: info@bartonfleming.co.uk

62 North Street, Bicester. OX26 6NF

Tel: Bicester (01869)

249922



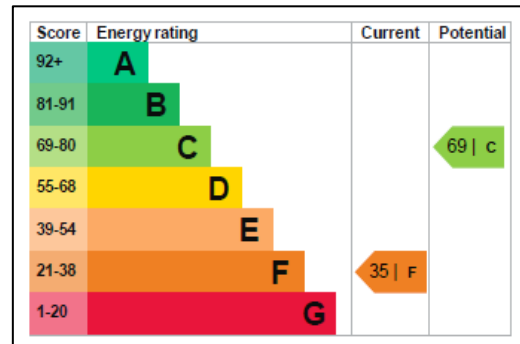
Annexe Bedroom



En-Suite to Annexe Bedroom



Garden to Annexe Bedroom



EPC



BARTON FLEMING

INDEPENDENT ESTATE AGENTS

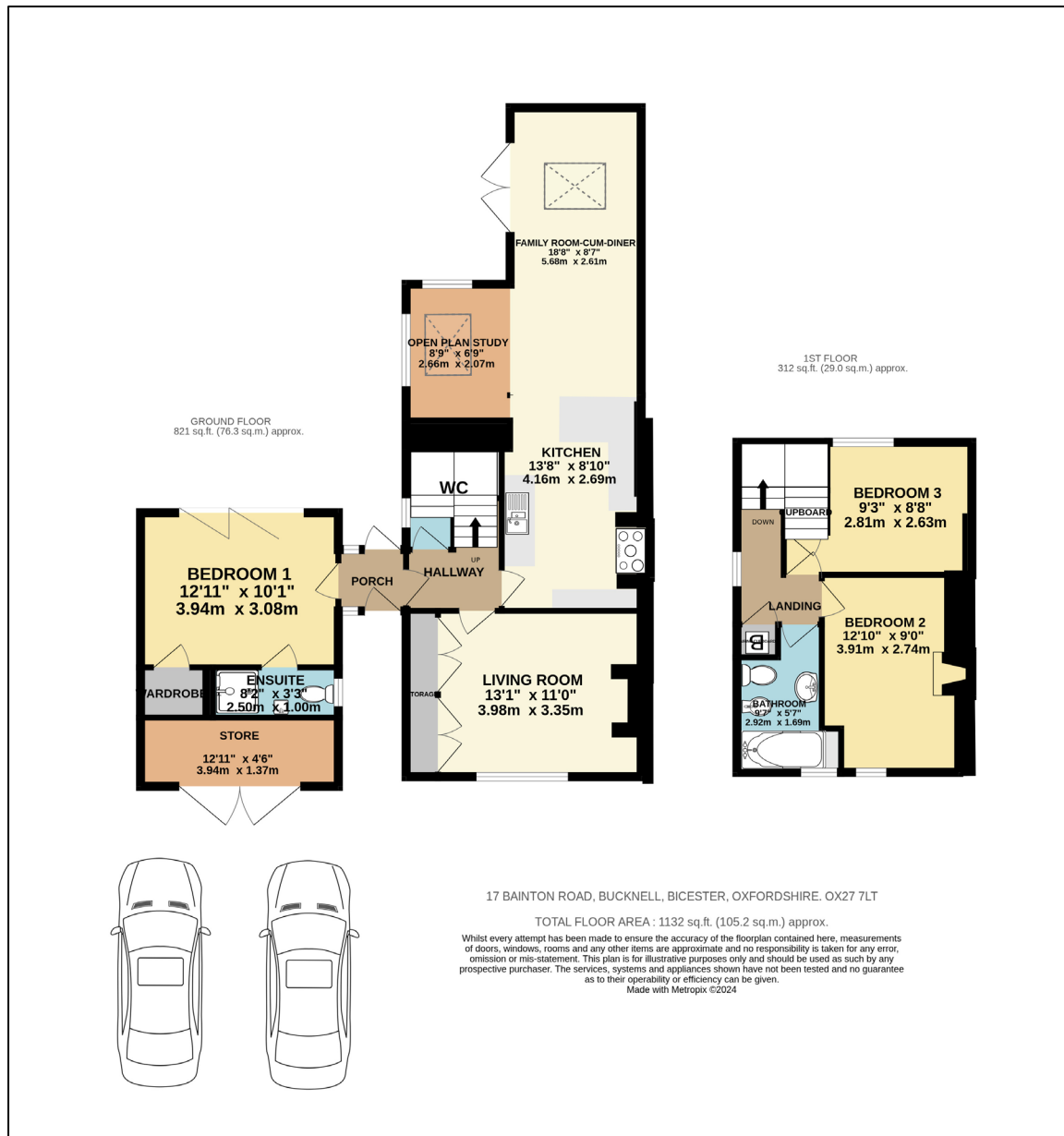
Web: www.bartonfleming.co.uk

E-mail: info@bartonfleming.co.uk

62 North Street, Bicester. OX26 6NF

Tel: Bicester (01869)

249922



These particulars do not constitute any part of an offer or a contract. Whilst every care has been taken to ensure accuracy, no responsibility for errors or mis-description is accepted. Any intending purchaser must satisfy himself by inspection or otherwise as to the correctness of each of the statements in these particulars. The vendor does not make or give and neither Barton Fleming nor any person in their employment, has authority to make or give any representation or warranty whatsoever in relation to this property. Land Registry Plans are provided as guidance only and while LRP documents are generated from what is registered at the point at when the plans are downloaded for use in these particulars, they are not guaranteed to represent the property title at any given moment. Buyers should satisfy themselves through their solicitor as to the accuracy of the land registration at any given moment.