



## Aspen Gardens, W6

**£669** Per week

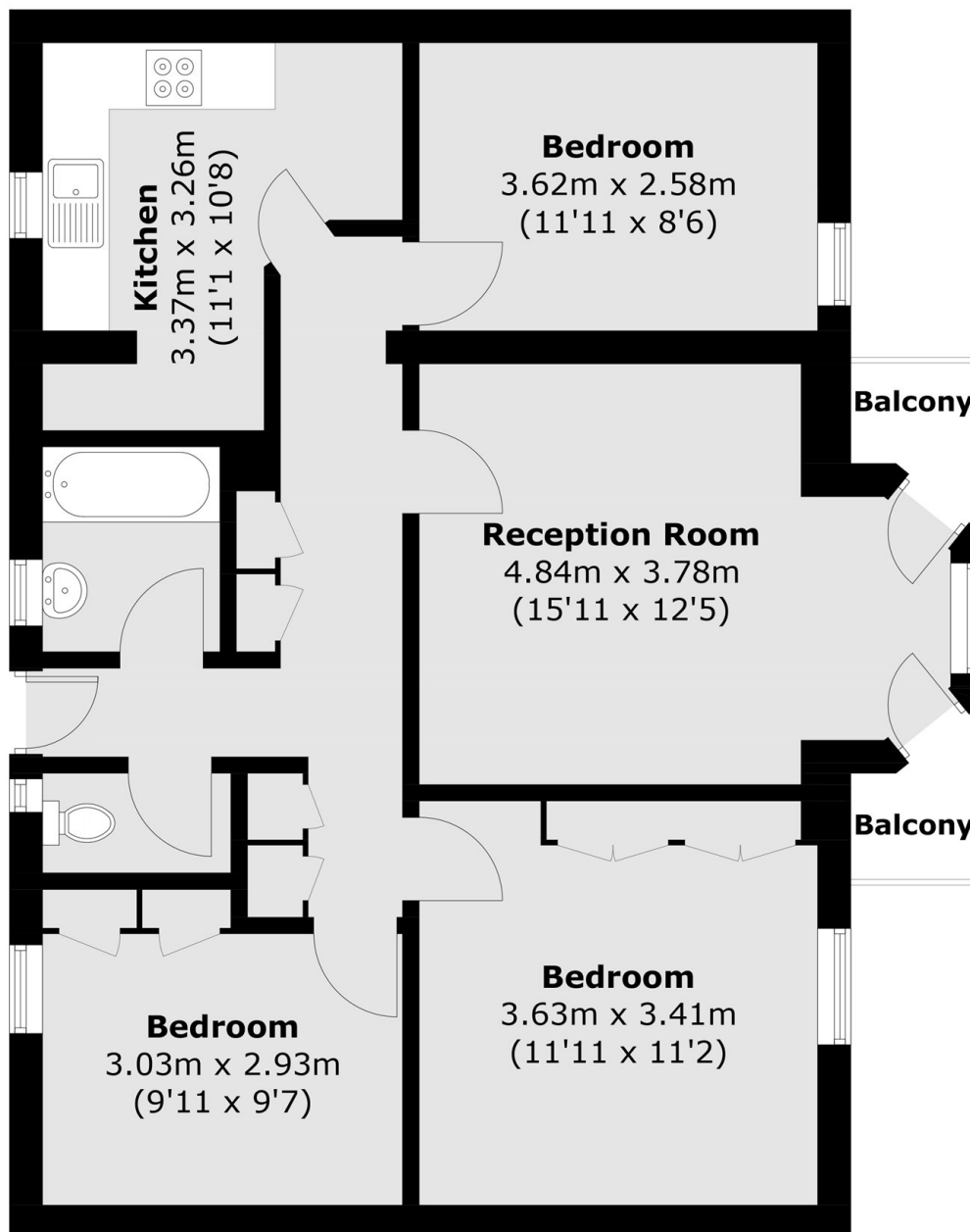
A newly redecorated three bedroom flat with a spacious living area and private balcony. There are three double bedrooms with plenty of built in storage, living room with balcony, as well as a separate eat-in kitchen.

Aspen Gardens is situated within walking distance to King Street, Hammersmith Station and the amenities of Hammersmith Broadway.

### Features

- Three Double Bedrooms
- Separate Kitchen
- Wood Flooring
- Private Balcony
- 820 Sq Ft of Space
- Hammersmith Station

# Aspen Gardens, London, W6



Total area (approx.): 76.2 sq. m (820.2 sq. ft)  
Balcony: 2.6 sq. m (28.0 sq. ft)

## Dexters

Hammersmith  
164-166 King Street  
London  
W6 0QU  
Lettings  
020 8939 6062

Energy Rating: . We aim to make our particulars both accurate and reliable. However they are not guaranteed; nor do they form part of an offer or contract. If you require clarification on any points then please contact us, especially if you're traveling some distance to view. Please note that appliances and heating systems have not been tested and therefore no warranties can be given as to their good working order.

 **RICS** | Regulated  
Estate Agent  
and Letting Agent

dexters.co.uk