



Atwood Road, W6
£1,550,000

Dexters



Atwood Road, W6

This stunning Victorian townhouse has been beautifully renovated to create a spacious family home across four storeys. It benefits from a front garden, rear courtyard garden, and generous roof terrace (with long-established use, in situ for over a decade) for further outside relaxing and entertaining.

The house is stylish and practical for the perfect family home, offering an abundance of living space with beautiful high ceilings throughout. The ground floor has been fully reconfigured to allow a flow between the dining room, a modern fitted kitchen with integrated appliances, and a sun-filled living room, opening onto the rear courtyard garden which is accessed through sleek sliding doors. The ground floor is completed by an understairs W.C. The first floor includes a large bedroom spanning the full width of the house with built-in alcove storage. There is an additional bedroom/study which offers direct access to the roof terrace. The second floor houses the master bedroom with built-in wardrobes and an elegant four-piece family bathroom. The top floor comprises a large bedroom with bathroom and Juliet balcony.

Atwood Road is one of the most desirable roads in Brackenbury Village due to its proximity to fantastic schools and a full range of amenities and transport links.

Features

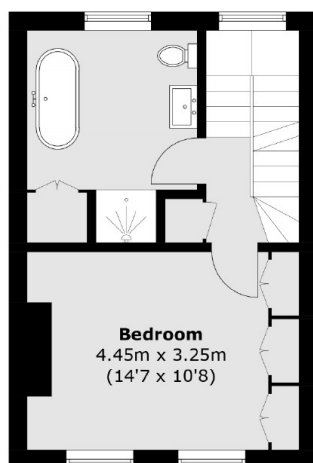
- Four Bedrooms
- Two Bathrooms
- Wired For Internet & Sound Throughout
- Roof Terrace
- Immaculate Condition



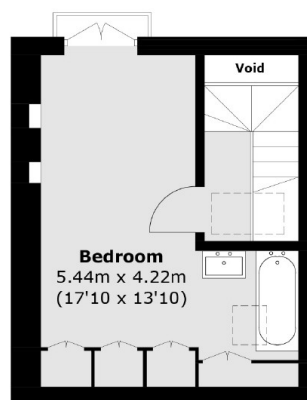




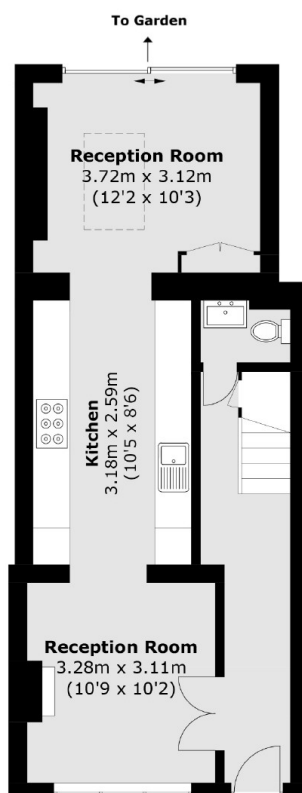
Atwood Road, London, W6



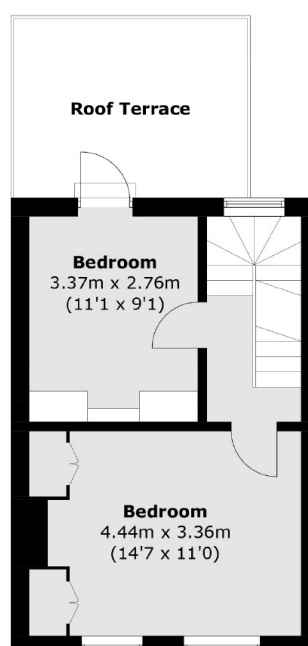
Second Floor



Third Floor



Ground Floor



First Floor

Total area (approx.): 131.8 sq. m (1,418.6 sq. ft)
Roof Terrace: 11.3 sq. m (121.6 sq. ft)