

King Street, W6

£375,000

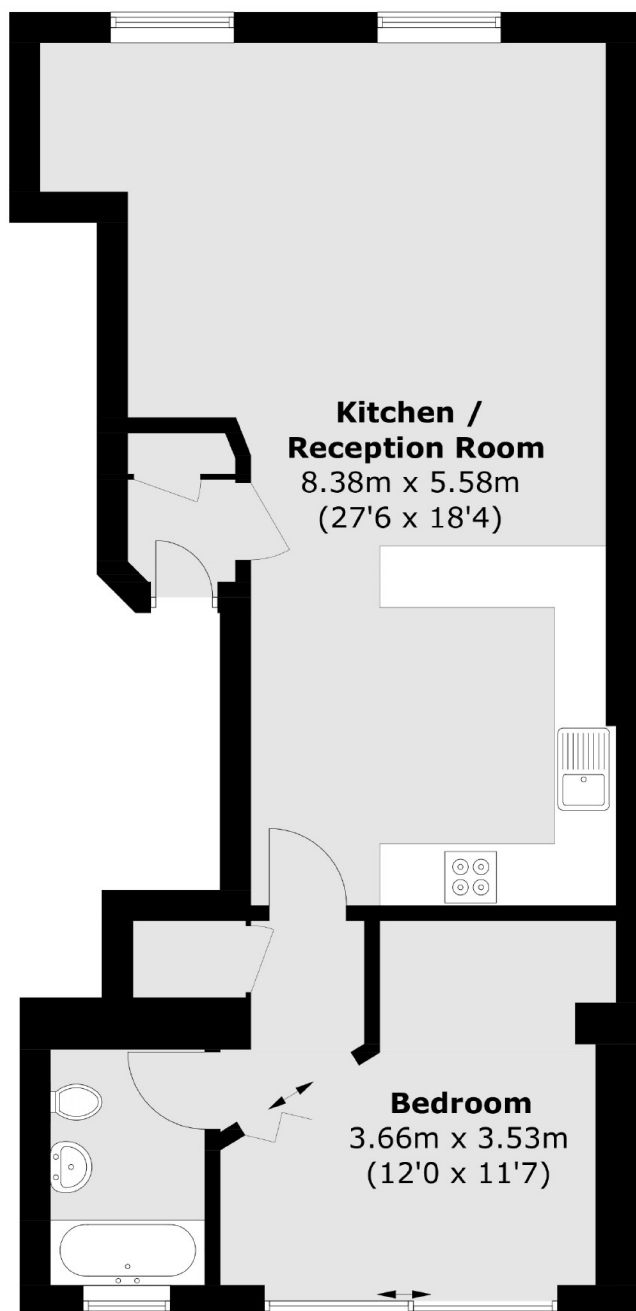
This large one bedroom apartment is located in the heart of Hammersmith. The property benefits from an open plan kitchen and living space and is within walking distance to Hammersmith Broadway and the River Thames.

King Street is close to the River Thames and Hammersmith station. There are a variety of local shops nearby and also quaint pubs nearby.

Features

- One Bedroom
- One Bathroom
- Open Plan
- Light
- Hammersmith Broadway
- Ravenscourt Park

**King Street,
London, W6**



First Floor

Total area (approx.): 56.9 sq. m (612.4 sq. ft)

Dexters

Hammersmith
164-166 King Street
London
W6 0QU
Sales
020 8939 6061

Energy Rating: F. We aim to make our particulars both accurate and reliable. However they are not guaranteed; nor do they form part of an offer or contract. If you require clarification on any points then please contact us, especially if you're traveling some distance to view. Please note that appliances and heating systems have not been tested and therefore no warranties can be given as to their good working order.

 **RICS** | Regulated
Estate Agent
and Letting Agent

[dexters.co.uk](https://www.dexters.co.uk)