



Yeldham Road, W6

£1,299,950

Dexters



Yeldham Road, London, W6

This wonderfully presented four bedroom, two bathroom period house is located close to the River Thames. This house would make a wonderful family home.

The house presents itself as a fine family home, offering an excellent combination of entertaining and living space. There is a reception room to the front of property with plenty of natural light. At the rear of the house there is a bedroom and access to a terrace.

On the lower ground floor there is open plan kitchen and a second reception room with a guest wc and also a utility room. On the first floor is the master bedroom which is filled with natural light and also the family bathroom. On the top floor are two large double bedrooms and also further bathroom.

The house has a lovely feeling of light and space throughout and would make a lovely family home and great investment.

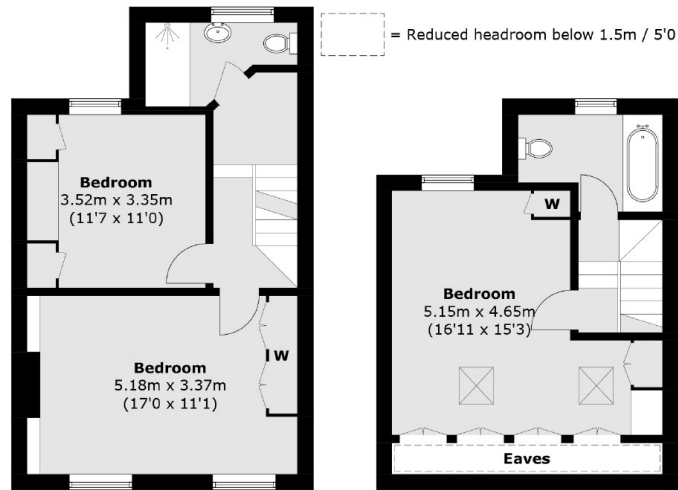
Yeldham Road is a short walk to the river and Thames Path, the excellent shopping and amenities at Hammersmith Broadway, as well as all the new bars and restaurants at the Fulham Reach and Riverside Studios developments.

Features

- Four Bedrooms
- Four Floors
- Freehold
- Family House
- Garden
- River Thames Close By

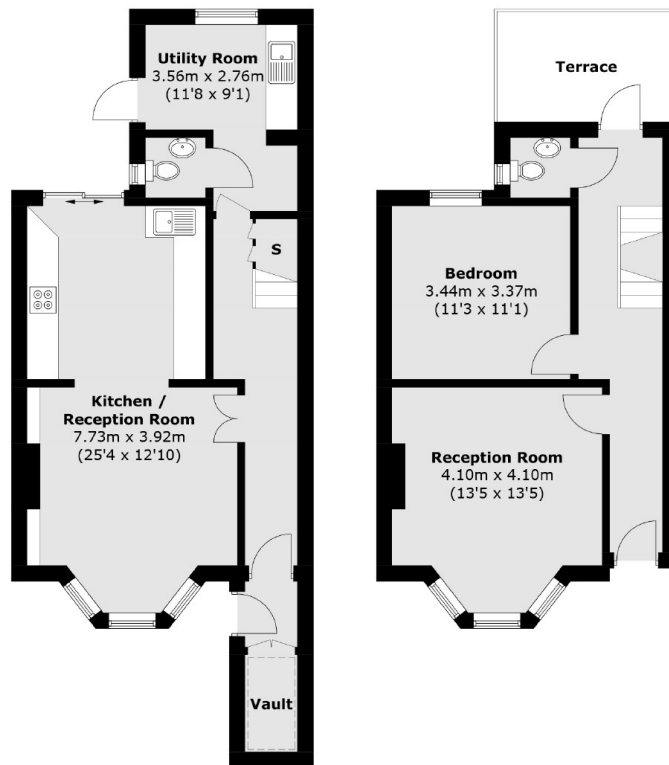


Yeldham Road, London, W6



First Floor

First Floor



Lower Ground Floor

Ground Floor

Total area (approx.): 159.7 sq. m (1,718.8 sq. ft)
(Including Vault / Excluding Eaves)
Terrace (approx.): 7.1 sq. m (76.4 sq. ft)



Hammersmith
164-166 King Street,
Hammersmith, London, W6
Sales
020 8939 6061

Energy Rating: . We aim to make our particulars both accurate and reliable. However they are not guaranteed; nor do they form part of an offer or contract. If you require clarification on any points then please contact us, especially if you're traveling some distance to view. Please note that appliances and heating systems have not been tested and therefore no warranties can be given as to their good working order.



dexters.co.uk