



Hammersmith Grove, W6

£1,225,000

This stunning three bedroom flat is presented in immaculate condition having undergone a full renovation and remodel, the flat now benefits from three double bedrooms, a sprawling kitchen, dining and entraining space as well as a family bathroom and modern five piece en-suite to the master bedroom, which further benefits from a Juliet balcony. The flat further benefits from potential to create a roof terrace on the second floor half landing, aswell as being offered with a Share Of Freehold and Chain free.

Hammersmith Grove is a wide tree-lined street in Brackenebury Village offering convenience of two stations in Shepherds bush and Hammersmith as well as

Features

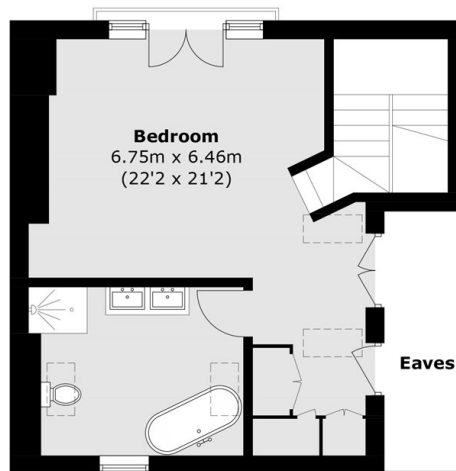
Thee Double Bedrooms
Two Bathrooms
Sprawling Kitchen/Reception
Over 1150sq ft
Share Of Freehold
Chain Free



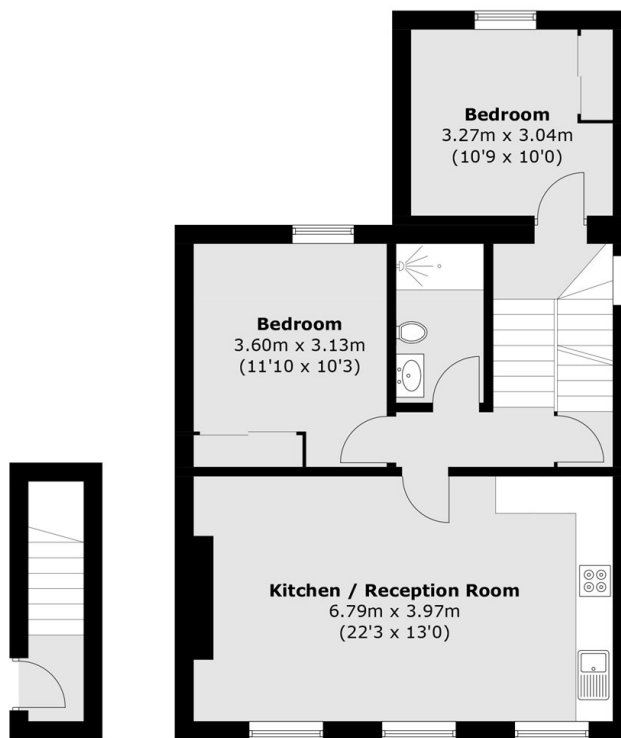
Hammersmith Grove, W6



Hammersmith Grove, London, W6



Third Floor



First Floor

Second Floor

Total area (approx.): 107.1 sq. m (1,152.7 sq. ft)
(Excluding Eaves)