



Ravenscourt Gardens, W6

£484 Per week

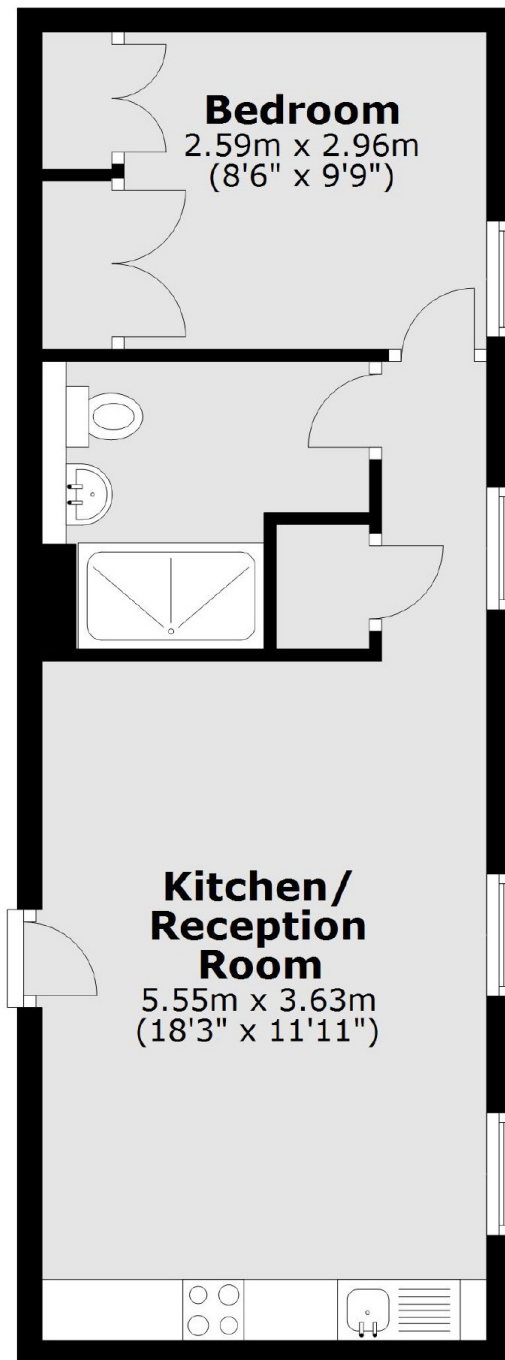
One bedroom apartment in a desirable secure development benefitting from a concierge close to Ravenscourt Park. This property is modern throughout and has an open plan kitchen and reception room, double bedroom with built-in storage and contemporary bathroom.

The property is in a secure gated development close to Ravenscourt Park and Stamford Brook tube station.

Features

- One Bedroom
- Modern
- Concierge
- Underfloor Heating
- Gated Development
- Ravenscourt Park

Ravenscourt Gardens, London, W6



Total area: approx. 38.8 sq. metres (418.1 sq. feet)