

## Riverside Gardens, W6

**£427** Per week

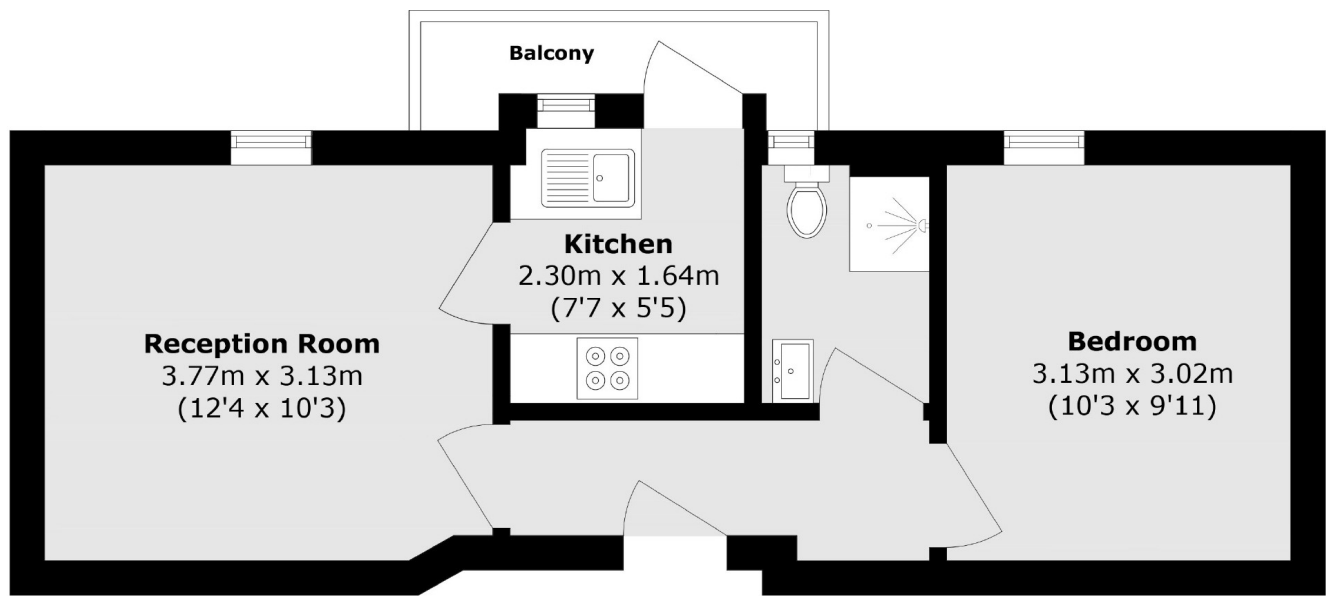
Electricity is included in the rent. A well presented one bedroom flat with a private balcony. The flat is on the first floor of a well located development with a bright living area, modern kitchen with balcony, spacious bedroom and modern bathroom.

The property is in Riverside Gardens in central Hammersmith, a short walk from Ravenscourt Park and Hammersmith tube stations.

### Features

- One Bedroom
- Private Balcony
- Electricity Included
- Modern Kitchen & Bathroom
- Good Transport Links

# Riverside Gardens, London, W6



Total area (approx.): 31.5 sq. m (339.0 sq. ft)

Balcony area (approx.): 2.1 sq. m (22.6 sq. ft)