

King Street, W6

£2,500 Per calendar month

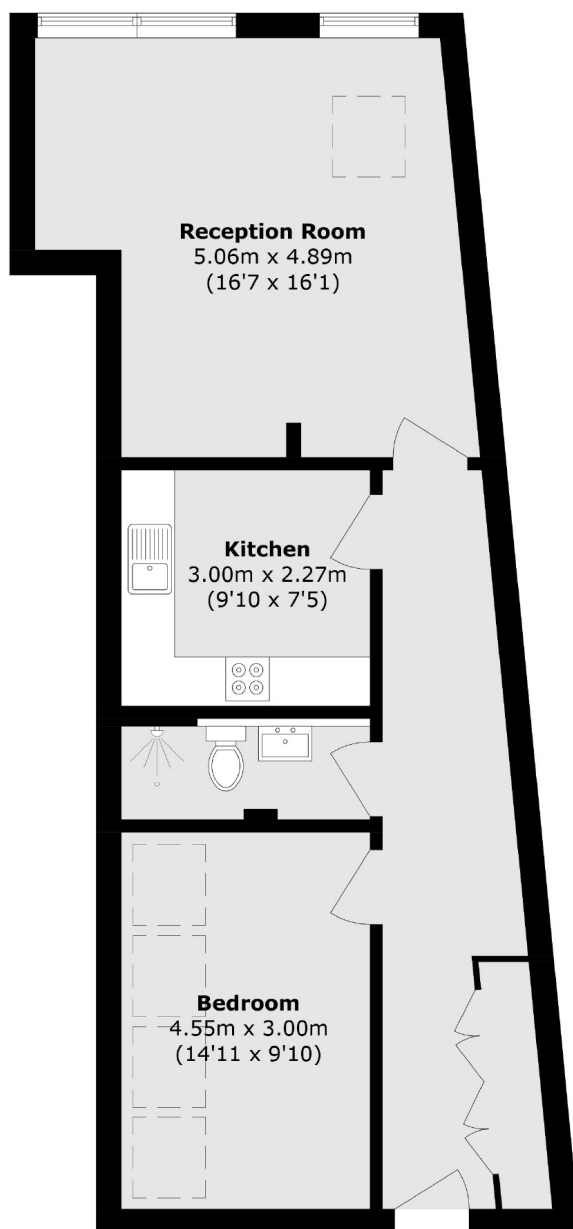
An exciting opportunity to rent a brand new one bedroom apartment in a stunning new development in the heart of Hammersmith. This apartment offers 715 sq ft of space and consists of a spacious living area with floor to ceiling windows, a separate kitchen with integrated appliances, large bedroom and modern bathroom. This property is fitted with skylights, offering plenty of natural light throughout. Further benefits include secure-video entry and wood flooring throughout.

King Street is located in the heart of Hammersmith, offering easy access to restaurants, shops and bars. Hammersmith Station and Ravenscourt Park Station are within a few minutes walk to the development.

Features

- Brand New Development
- Modern Throughout
- Natural Light
- Wood Flooring
- Secure Video Entry
- Excellent Location

King Street, London, W6



Total area (approx.): 66.5 sq. m (715.8 sq. ft)