



## Peabody Estate, W6

£565 Per week

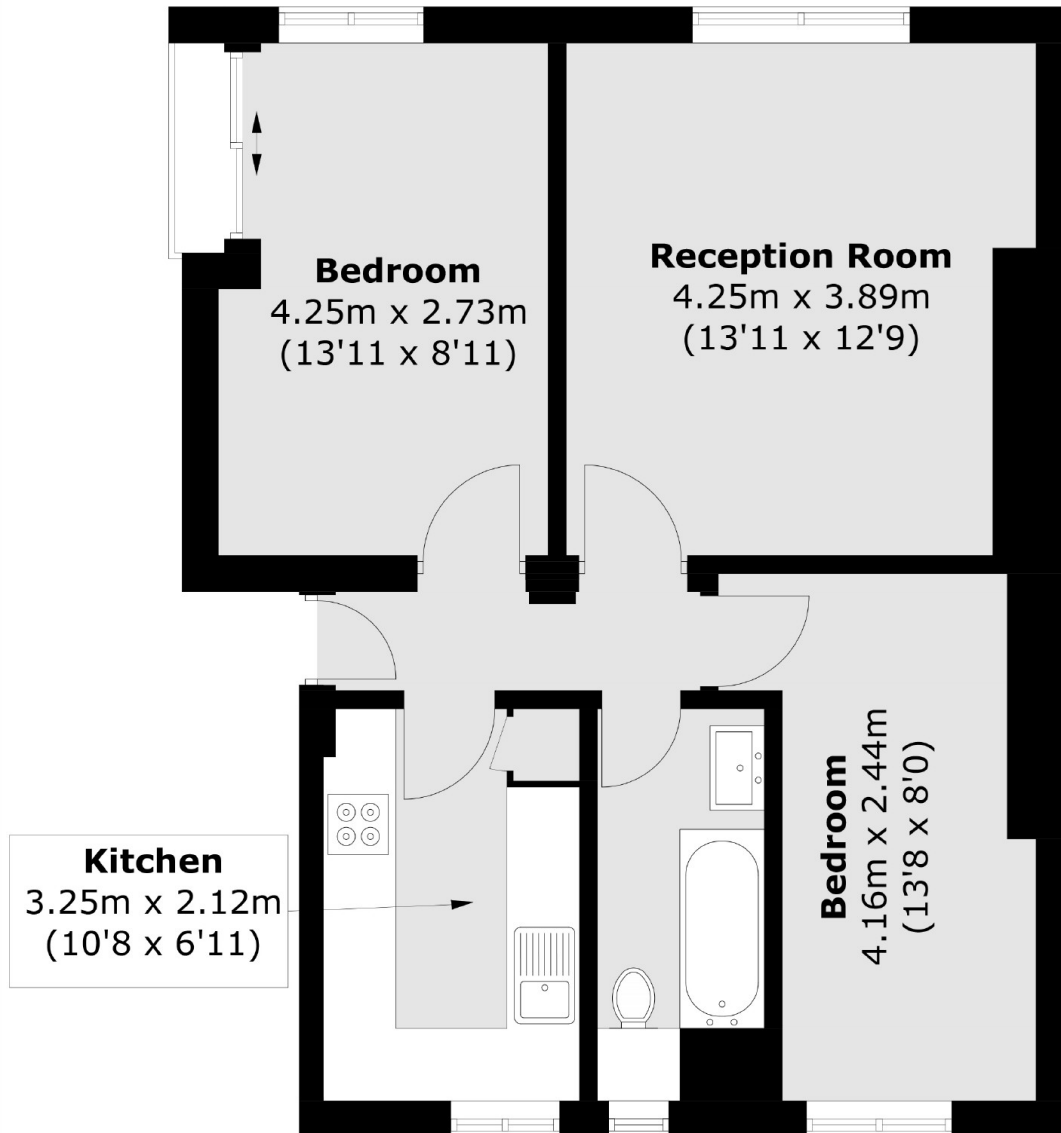
This spacious two bedroom apartment is within a private development, situated a short walk from Hammersmith tube. This property has two large bedrooms, a separate living reception with ample of space for dining and comfortable living, as well as access to a shared communal garden. The kitchen is fully fitted with a brand new fridge/freezer, hob and boiler and also includes a dishwasher and a washer/dryer unit. It is perfect the perfect home for professional couples or sharers looking to be close to good transport links.

Peabody Estate has good access to the amenities of Fulham Palace Road, and Hammersmith. These include bistro bars & restaurants, shopping on King street combined with excellent transport links, it is also eligible for a parking permit.

### Features

- Two Bedrooms
- One Bathroom
- Separate Reception Room
- Fully Fitted Kitchen
- Transport Links
- Purpose-Built Development

# Peabody Estate, London, W6



Total area (approx.): 54.9 sq. m (590.9 sq. ft)