



Hammersmith Grove, W6

£530 Per week

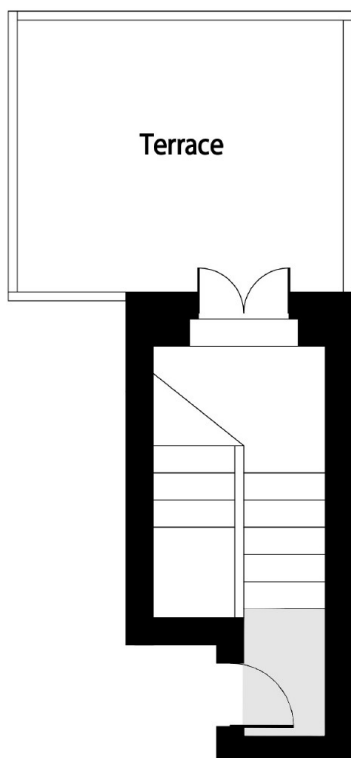
This spacious one bedroom flat on Hammersmith Grove offers over 650 sq ft of space, as well as a private roof terrace. The property has plenty of natural light throughout and has a spacious reception room with a separate kitchen, a modern tiled bathroom, a double bedroom with built-in storage and a large private terrace.

Hammersmith Grove is a highly sought after location, ideally located with convenient transport links and shopping amenities in close proximity. Goldhawk Road station is a short walk away as well as Westfield Shopping Centre.

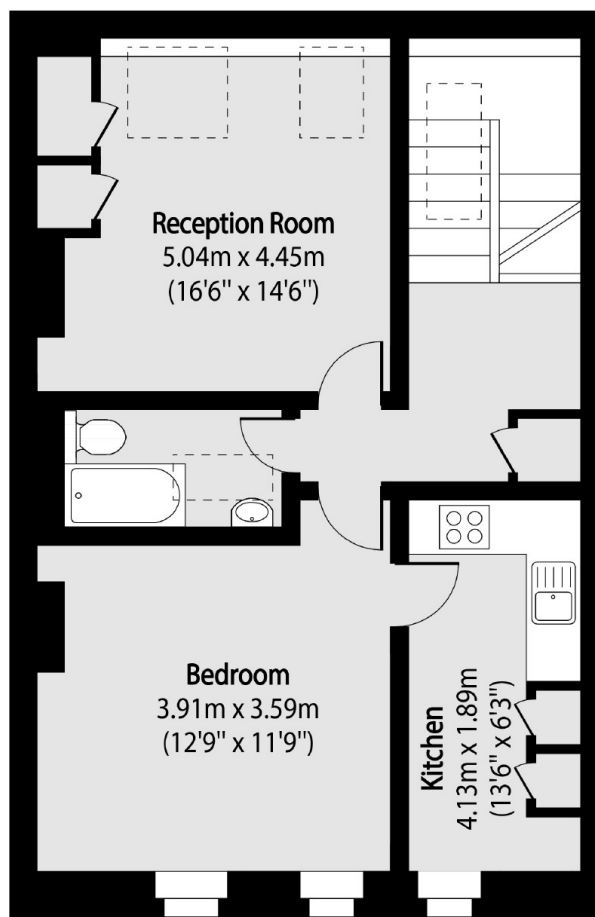
Features

- One Bedroom
- Roof Terrace
- Large Reception
- Tiled Bathroom
- Brackenbury Village

Hammersmith Grove, London, W6



Second Floor



Third Floor

Total area (approx): 61.93 sq m (667 sq. ft)

Terrace Total area (approx): 10.80 sq m (116 sq. ft)