



Riverview Gardens, SW13

£825,000

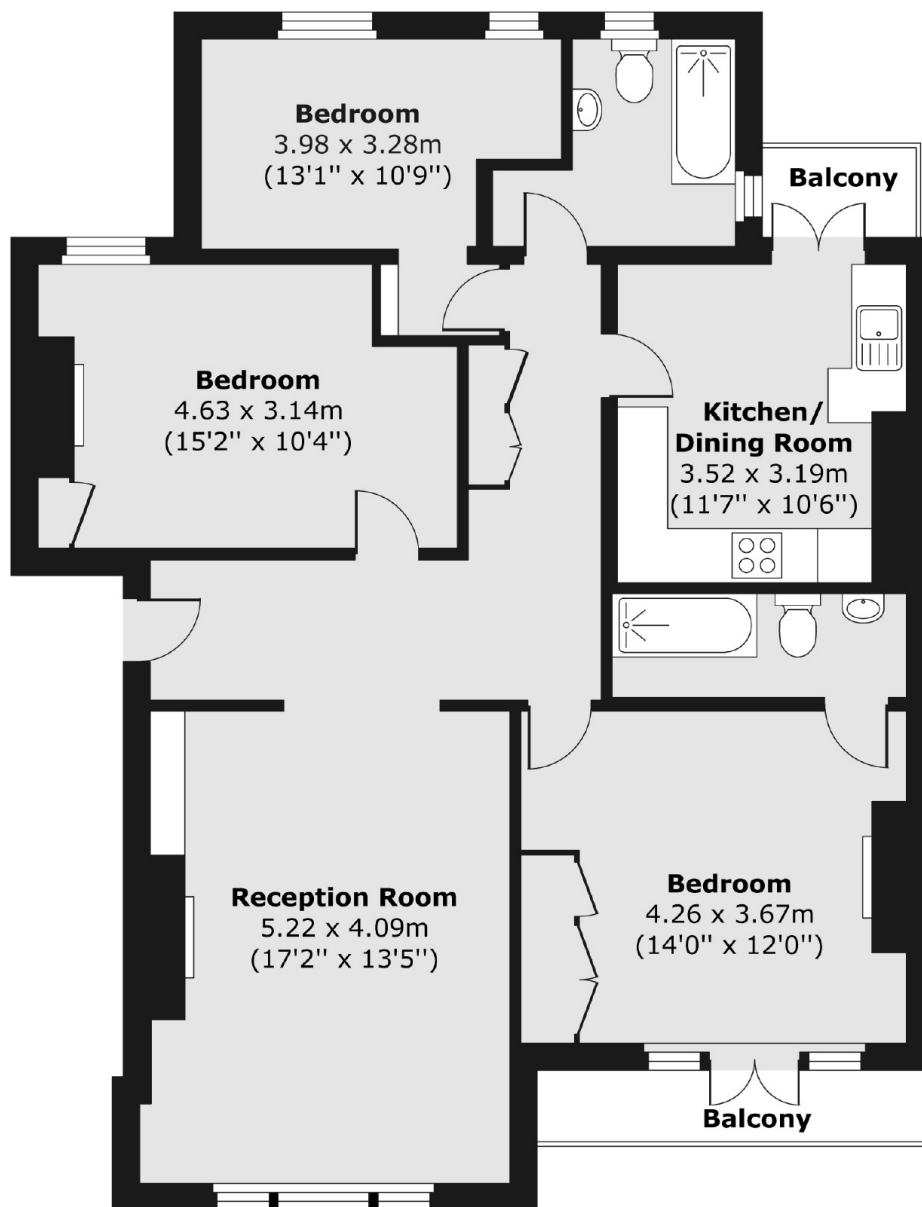
This wonderful, light filled three bedroom apartment on the second floor of a mansion block beside the River Thames. The apartment is ideally located close to Hammersmith Bridge and Barnes Village. The property offers lateral space, three double bedrooms, family bathroom, second bathroom, and two balconies. You also have access to communal gardens at the back of the property and on the river. The property further benefits from a quiet atmosphere and an abundance of natural light due to being located at the end of the terrace and on the top floor.

Riverside Gardens is near Hammersmith Bridge with some picturesque pathways along the Thames. Barnes Village is to the South, and Hammersmith Broadway offers underground lines and M4 access.

Features

- Three Bedrooms
- Two Balconies
- Two Bathrooms
- Abundance Of Natural Light
- Communal Gardens
- River Thames

Riverview Gardens, London, SW13



Total area (approx.) 96.71 sq. m (1,041 sq. ft)
Balcony area (approx.) 5.11 sq. m (55 sq. ft)