

Goldhawk Road, W6

£807 Per week

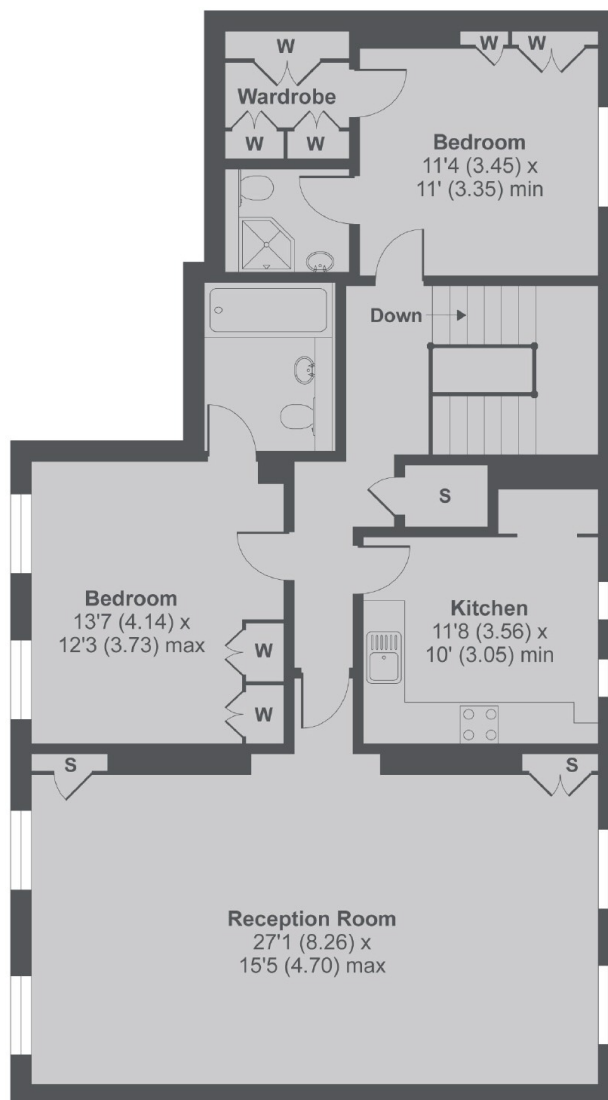
A large two bedroom, two bathroom apartment situated within a converted Gothic-style Grade II listed building, the apartment is split across two levels and offers over 1,300 sq ft of space, with a large reception room, eat in kitchen, two double bedrooms both with en-suits. There is also an additional guest cloakroom/wc (downstairs) off entrance foyer. The apartment also comes with secure off-street parking for one car.

Features

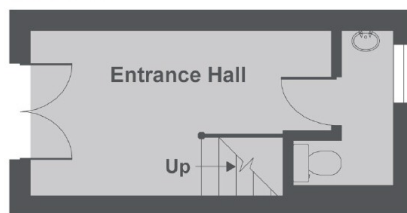
- Split Level Apartment
- Modern Eat In Kitchen
- Large Reception
- Two Double Bedrooms
- Two Bathrooms
- Gated Parking

The property is located close to Chiswick High Road and Turnham Green and is 0.18 miles from Stamford Brook Station.

Goldhawk Road, London, W6



1st Floor



Ground Floor

Goldhawk Road W6

MAIN HOUSE APPROX FLOOR AREA 1344 SQ.FT 124.8 SQ.M

Copyright nichecom.co.uk 2016 Produced for Dexters REF : 156166

Dexters

Hammersmith
164-166 King Street
London
W6 0QU
Lettings
020 8939 6062

Energy Rating: D. We aim to make our particulars both accurate and reliable. However they are not guaranteed; nor do they form part of an offer or contract. If you require clarification on any points then please contact us, especially if you're traveling some distance to view. Please note that appliances and heating systems have not been tested and therefore no warranties can be given as to their good working order.

 **RICS** | Regulated
Estate Agent
and Letting Agent

dexters.co.uk