

## Raynham Road, W6

### £750,000

A beautifully renovated two-bedroom split-level apartment in the heart of Brackenbury Village. Featuring vaulted ceilings with skylights, exposed brickwork, and hardwood floors throughout, this light-filled home combines period charm with modern style. The property offers a spacious reception, separate kitchen-diner, and two generous double bedrooms.

Set on a picturesque residential street just moments from Ravenscourt Park and Hammersmith's excellent transport links, this is a rare opportunity to secure a characterful home in a sought-after location

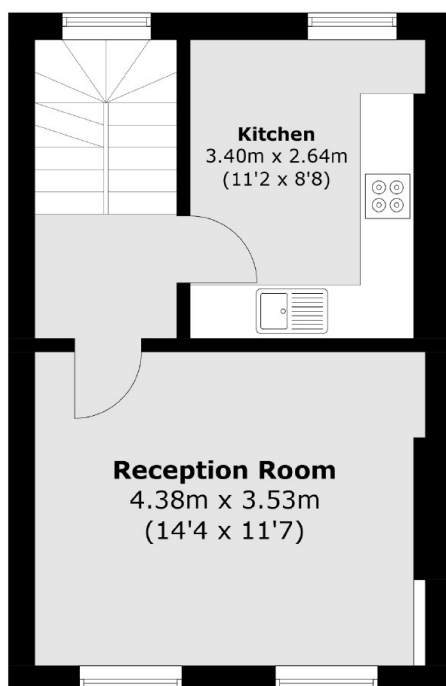
### Features

- Two Bedrooms
- Split Level
- Fully Renovated
- Light
- Brackenbury Village
- Hammersmith Broadway

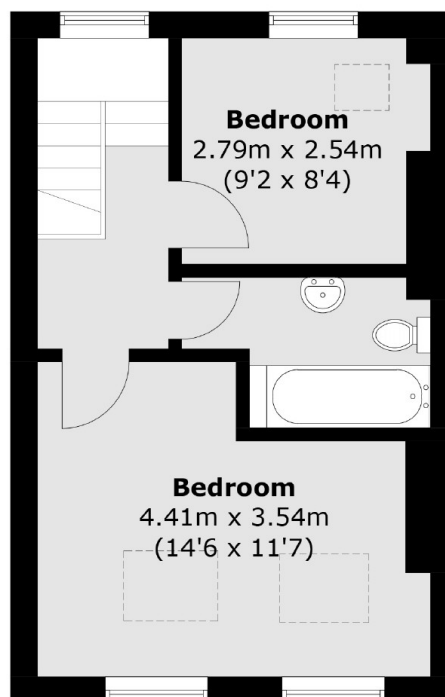
# Raynham Road, London, W6



**Ground Floor**



**First Floor**



**Second Floor**

Total area (approx.): 64.7 sq. m (696.4 sq. ft)