



Oriel Drive, SW13

£450,000

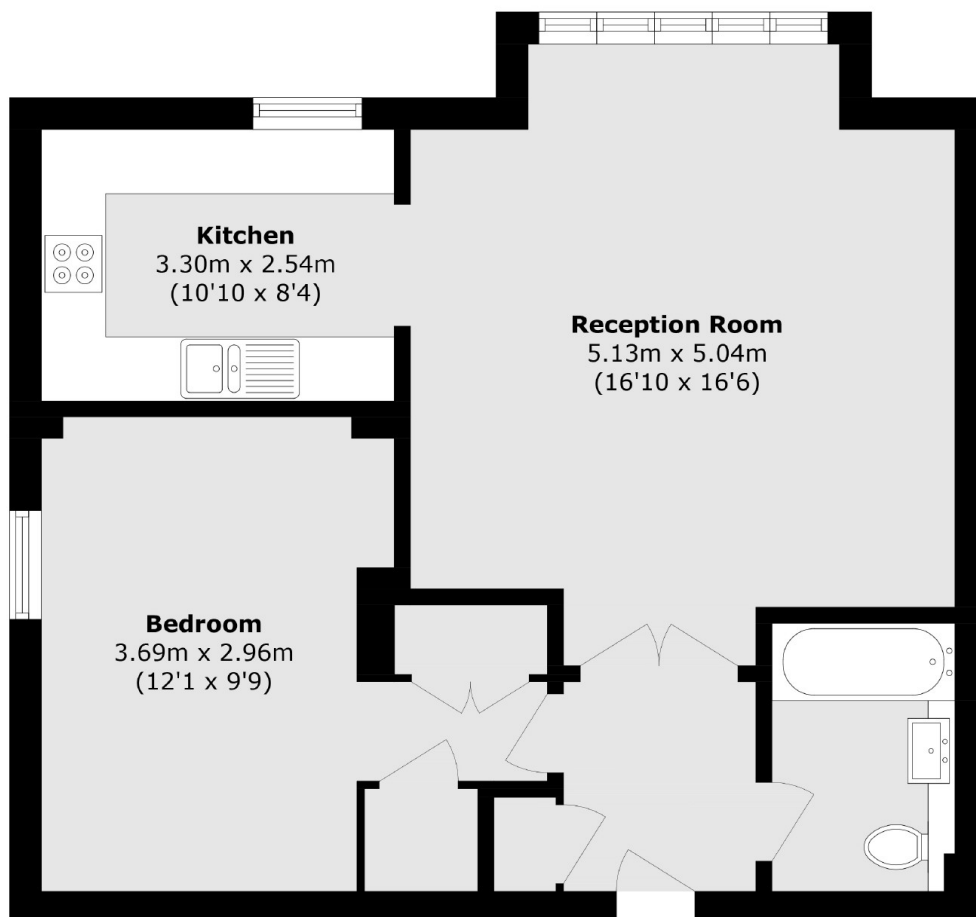
A wonderful light filled one bedroom apartment in the exclusive Harrods Village development. The property is presented in excellent condition spread out over 680 sq ft, it comes with an allocated parking space and is located in gated development with landscaped garden areas, 24-hour concierge/porter as well as a superb health complex which includes a swimming pool, gym, sauna, steam room and spa.

Harrods Village is a prestigious waterside development located just across Hammersmith Bridge, offering fantastic riverside walks and access to Hammersmith Station.

Features

- One Bedroom
- Exclusive Development
- Spa/Health Facilities
- Riverside Location
- Outstanding Amenities
- Chain Free

Oriel Drive, London, SW13



Total area (approx.): 63.2 sq. m (680.2 sq. ft)