

## Parr's Way, W6

### £995,000

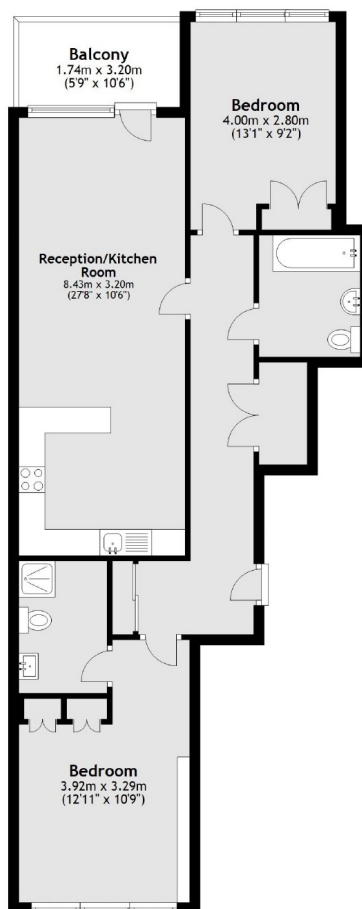
Located within the stunning Fulham Reach development the property offers a sprawling master bedroom with built in storage and a luxury en-suite bathroom, a second bright and sizeable bedroom with built in storage, there is also a modern family bathroom. Further benefits include an allocated underground parking space, concierge service and access to all the developments amenities such as, private residents gym, a cinema, a snooker room, a wine tasting room and even a virtual golf facility

Situated alongside the river, Brunswick House is ideally located to benefit from beautiful scenery and riverside walks while also being within a short walk of Hammersmith Underground station offering easy access to all parts of London.

### Features

- Two Double Bedrooms
- Two Bathrooms
- Private Balcony
- Upgraded Finish
- Views of Central London
- 7th Floor

# Parr's Way, London, W6



Main area: Approx. 77.6 sq. metres (834.8 sq. feet)  
Plus balconies, approx. 5.6 sq. metres (59.9 sq. feet)

## Dexters

Hammersmith  
164-166 King Street  
London  
W6 0QU  
Sales  
020 8939 6061

Energy Rating: To be confirmed. We aim to make our particulars both accurate and reliable. However they are not guaranteed; nor do they form part of an offer or contract. If you require clarification on any points then please contact us, especially if you're traveling some distance to view. Please note that appliances and heating systems have not been tested and therefore no warranties can be given as to their good working order.

 **RICS** | Regulated  
Estate Agent  
and Letting Agent

[dexters.co.uk](https://www.dexters.co.uk)