



Everdon Road, SW13

£850,000

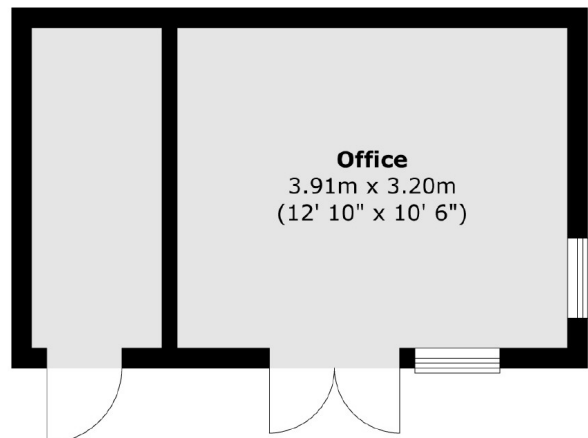
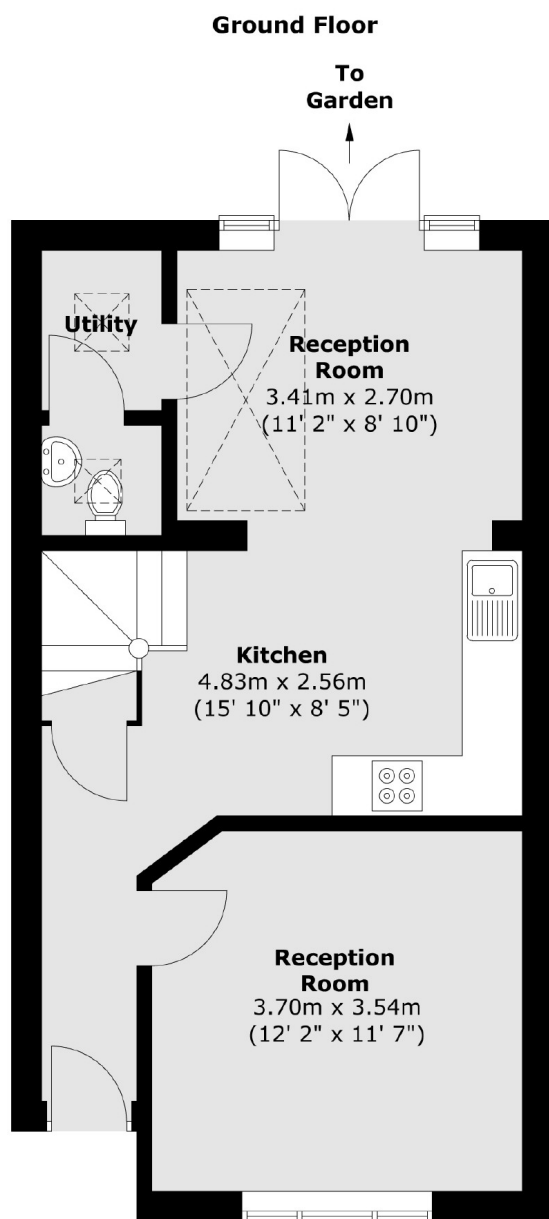
This modern and well presented two bedroom house is located in a quiet residential street within Barnes and benefits from off street parking and a modern home office in the garden.

Everdon Road is well located, moments away from many outstanding schools, such as The Harroddian School and The Swedish School, as well as local green spaces, such as Leg O Mutton, The London Wetland Centre, and Barnes Pond. Barnes Village holds a range of amenities. Hammersmith Station is just a short walk across Hammersmith Bridge, providing great transport links throughout London.

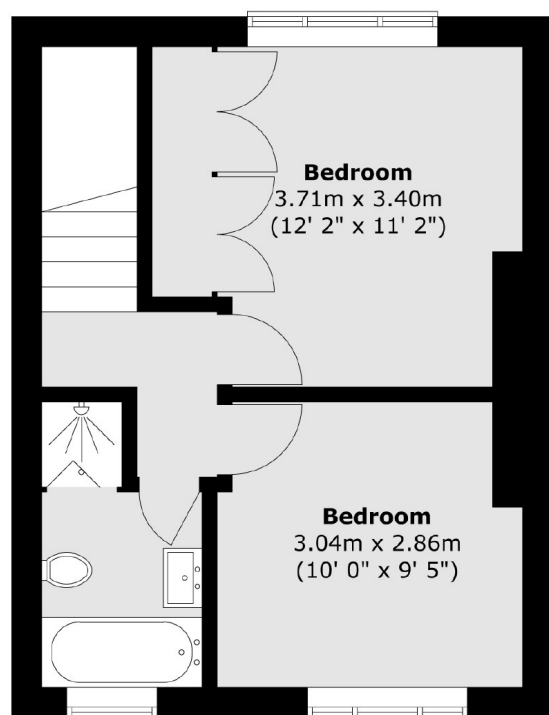
Features

- Two Bedrooms
- Modern Throughout
- Downstairs Utility & W.C.
- Potential To Extended STPP
- Home Office
- Off Street Parking

Everdon Road, London, SW13



First Floor



Total area (approx.) : 75.3 sq. m (810 sq. ft)
Total office area (approx.) : 17.1 sq. m (184 sq. ft)