



Ravenscourt Gardens, W6

£475,000

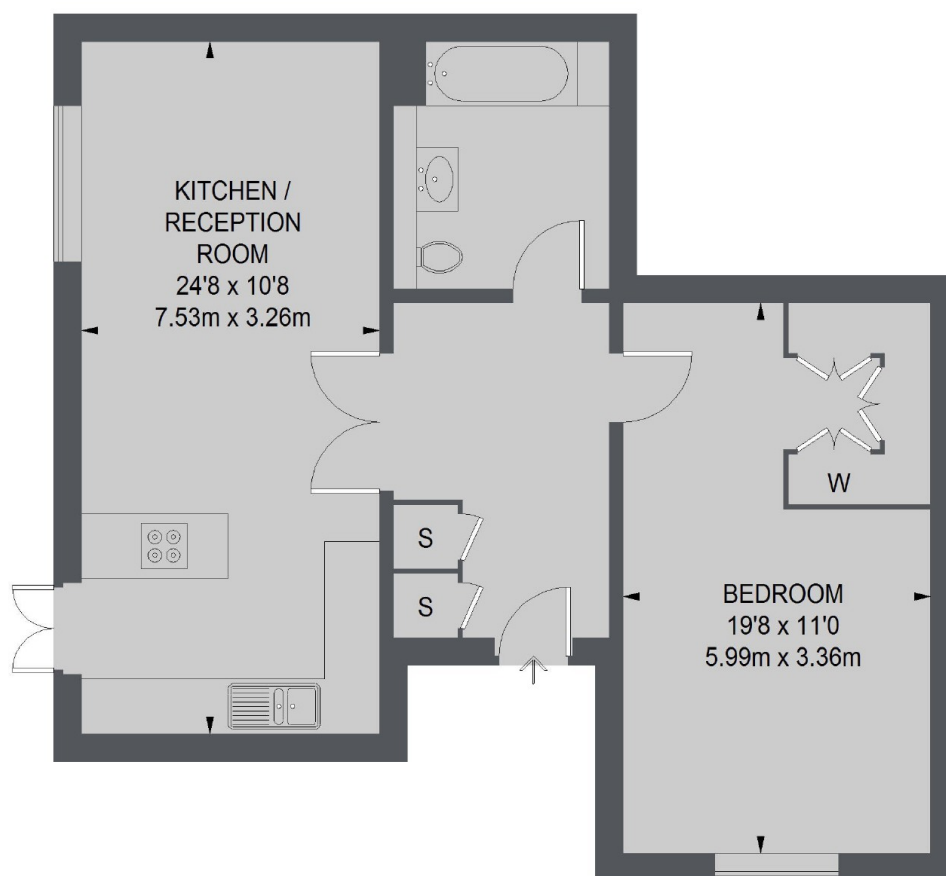
This beautifully finished large one bedroom apartment with a terrace is located in a desirable secure development close to Ravenscourt Park with concierge. This property would make a wonderful home or investment.

Ashlar Court is a Grade II listed building, ideal for access to Ravenscourt Park and with the numerous amenities of both Chiswick High Road and King Street within easy reach. The closest underground station to the property is located at Stamford Brook (District line).

Features

- Large One Bedroom
- Terrace
- Gated Development
- Concierge
- Communal Gardens
- Ravenscourt Park

Ravenscourt Gardens, London, W6



TOTAL APPROX. FLOOR AREA 665 SQ. FT. (61.81 SQ. M.)

Dexters

Hammersmith
164-166 King Street
London
W6 0QU
Sales
020 8939 6061

Energy Rating: B. We aim to make our particulars both accurate and reliable. However they are not guaranteed; nor do they form part of an offer or contract. If you require clarification on any points then please contact us, especially if you're traveling some distance to view. Please note that appliances and heating systems have not been tested and therefore no warranties can be given as to their good working order.

 **RICS** | Regulated
Estate Agent
and Letting Agent

[dexters.co.uk](https://www.dexters.co.uk)