



Trinity Church Road, SW13

£3,000 Per calendar month

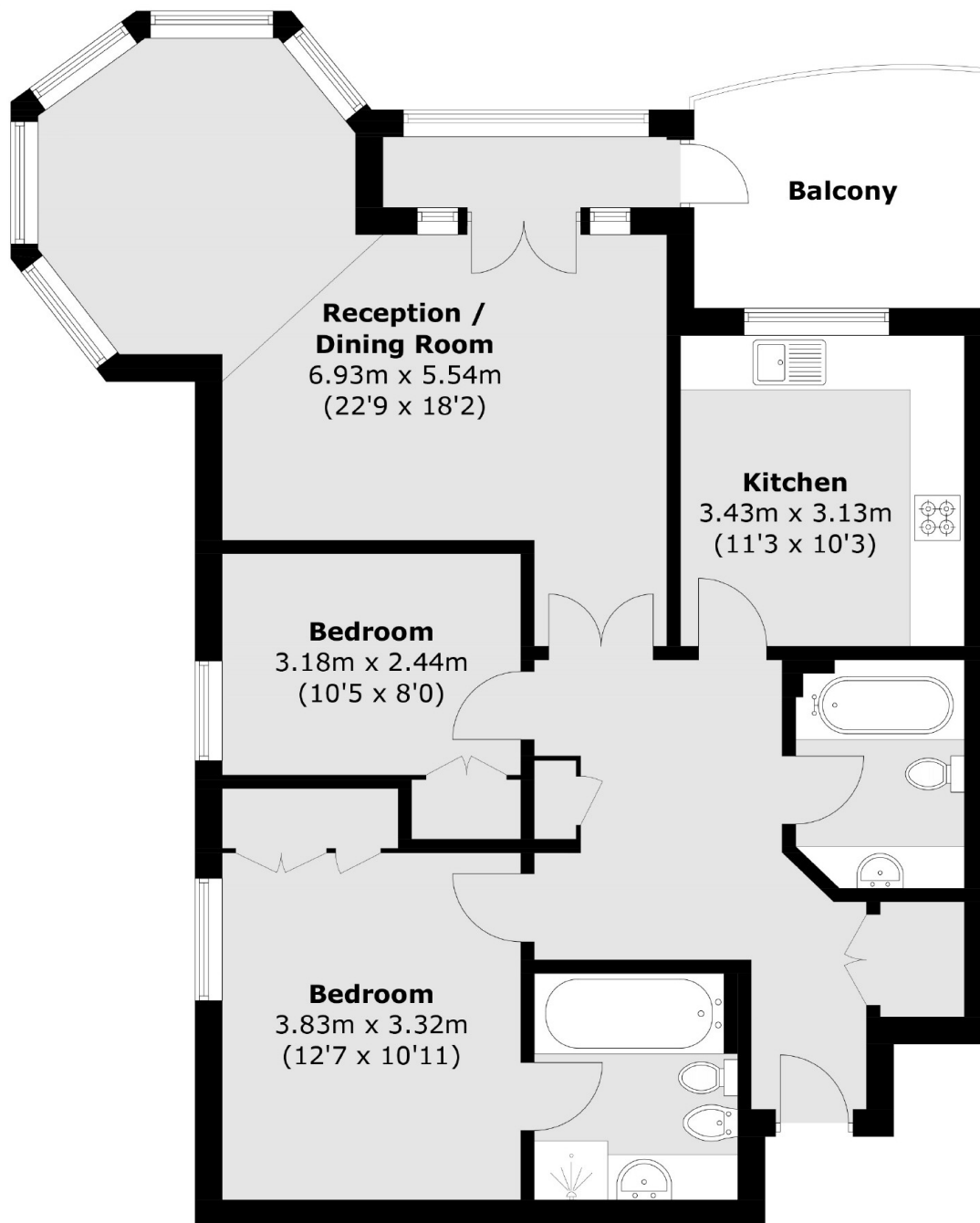
A bright and spacious south facing two double bedroom, two bathroom apartment arranged on the second floor of a popular private development. Offering over 990 sq ft of space, a private balcony, large living area and a separate dine-in kitchen, this apartment would make a wonderful home. Further benefits include a sun room and secure entry. Private garage/parking available upon separate negotiation.

Trinity Church Road is located within a couple of minutes walk to Castelnau and Hammersmith Bridge, with easy access to Hammersmith Station.

Features

- Private Development
- Two Bedroom
- Two Bathrooms
- South Facing
- Private Balcony
- Sun Room
- Parking Upon Negotiation

Trinity Church Road, London, SW13



Total area (approx.): 92.6 sq. m (996.7 sq. ft)
Balcony Area : 8.2 sq. m (88.3 sq. ft)

Dexters

Hammersmith
164-166 King Street
London
W6 0QU
Lettings
020 8939 6062

Energy Rating: C. We aim to make our particulars both accurate and reliable. However they are not guaranteed; nor do they form part of an offer or contract. If you require clarification on any points then please contact us, especially if you're traveling some distance to view. Please note that appliances and heating systems have not been tested and therefore no warranties can be given as to their good working order.

 **RICS** | Regulated
Estate Agent
and Letting Agent

[dexters.co.uk](https://www.dexters.co.uk)