

## Crisp Road, W6

### £475,000

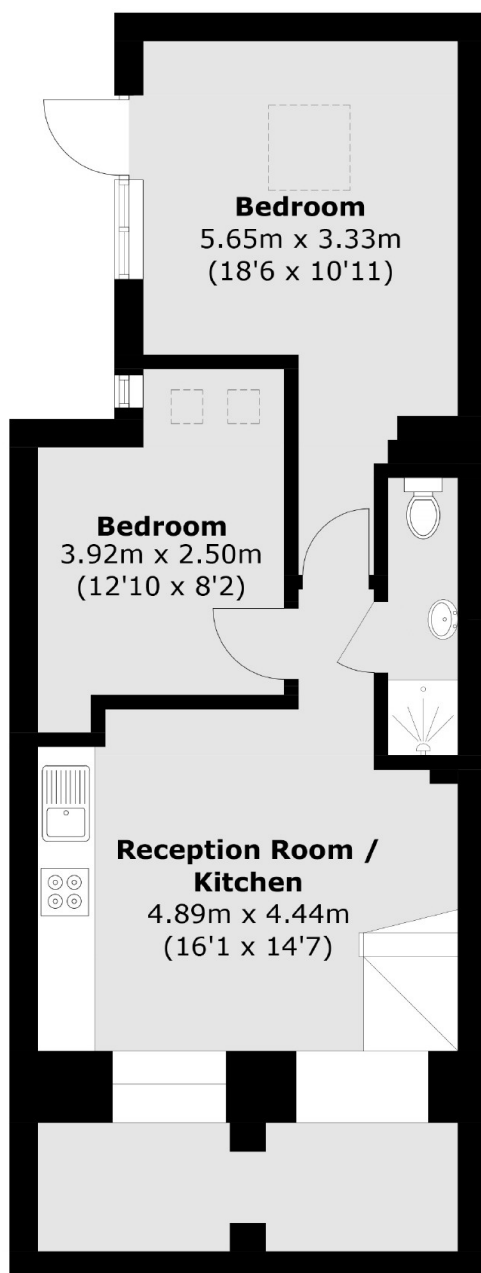
This is a beautifully presented two bedroom, one bathroom period flat which is located on a highly sought-after road close to the River Thames. Benefitting from an additional study space in the converted coal cellars this flat offers plenty of living space and has been kept in very good condition.

Located on a highly desirable street moments from the River Thames towpath, Crisp Road is in an enviably convenient location and is only a few minutes walk to Hammersmith underground station.

### Features

- Two Double Bedrooms
- One Bathroom
- Period
- Share of Freehold
- River Thames
- Hammersmith Station

# Crisp Road, London, W6



**Lower Ground Floor**



**Ground Floor**

Total area (approx.): 55.7 sq. m (599.4 sq. ft)