



Agate Road, W6

£799,950

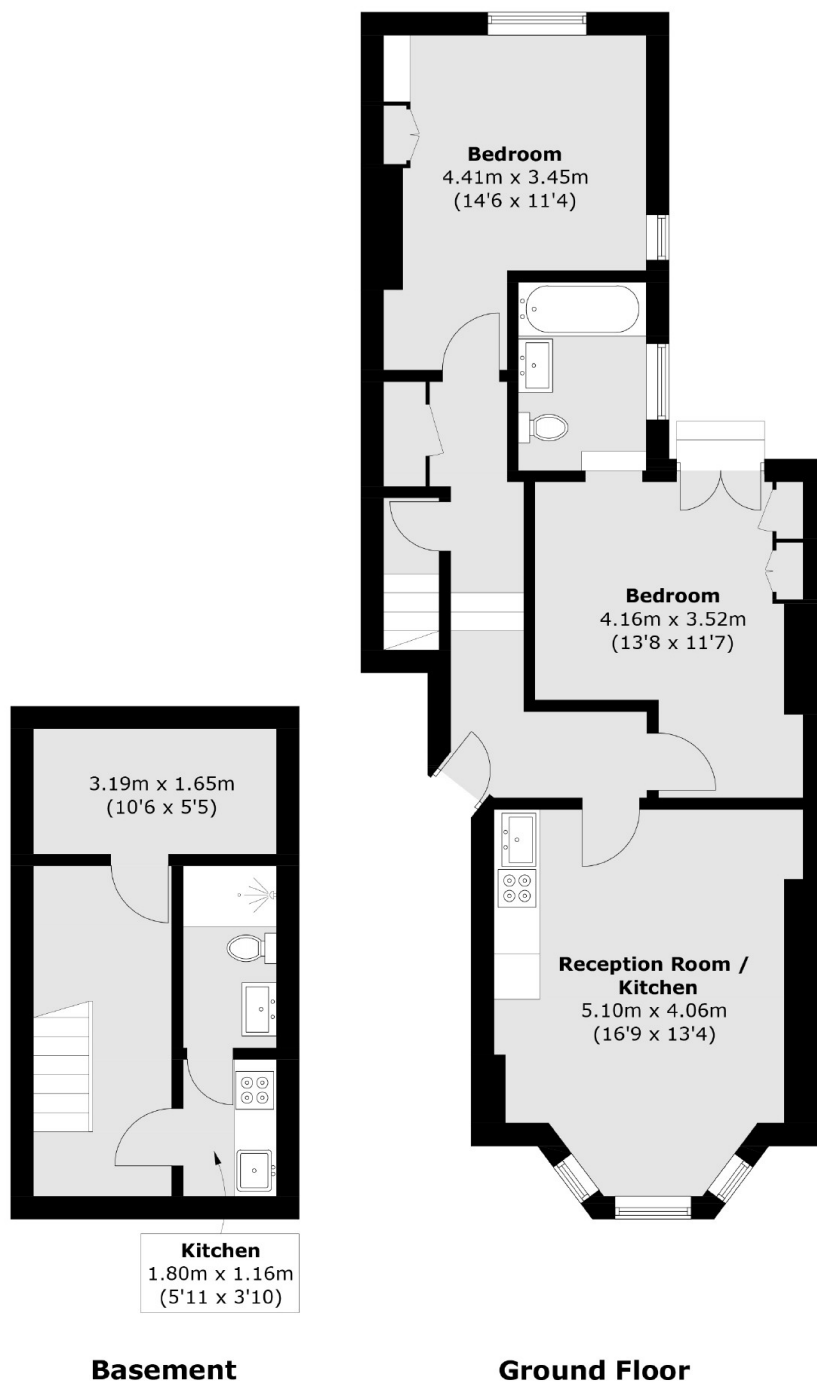
This newly renovated Victorian garden flat spans over 860sq feet of living space, benefiting from two bedrooms, two bathrooms and direct access to a private rear garden which offers potential to extend STPP.

Agate Road is located in the heart of Brackenbury Village with its popular independent shops, bars and restaurants as well as the green spaces of Ravenscourt Park and an abundance of transport links.

Features

- Two Bedrooms
- Two Bathrooms
- Converted Basement
- Private Garden
- Potential To Extend STPP
- Chain Free

Agate Road, London, W6



Total area (approx.): 80.6 sq. m (867.6 sq. ft)
(Including Basement)

Dexters

Hammersmith
164-166 King Street
London
W6 0QU
Sales
020 8939 6061

Energy Rating: C. We aim to make our particulars both accurate and reliable. However they are not guaranteed; nor do they form part of an offer or contract. If you require clarification on any points then please contact us, especially if you're traveling some distance to view. Please note that appliances and heating systems have not been tested and therefore no warranties can be given as to their good working order.

 **RICS** | Regulated
Estate Agent
and Letting Agent

[dexters.co.uk](https://www.dexters.co.uk)