

Hamlet Gardens, W6

£225,000

This studio flat is located in a portered block in Hamlet Gardens, close to Ravenscourt Park. Ideal for first time buyers, or as a rental investment, this apartment has been recently refurbished and benefits from plenty of natural light.

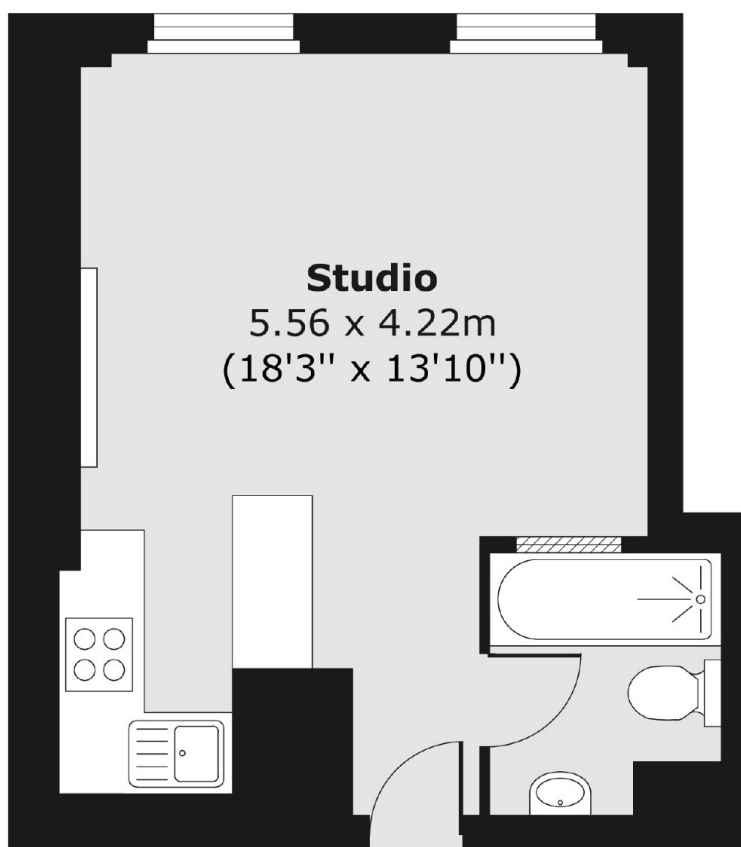
Kings Court is ideally placed for access to the host of amenities at Hammersmith Broadway and King Street, and only moments from the green open spaces of Ravenscourt Park.

Features

- Studio Apartment
- Bright Flat
- Porter
- Lift
- Ravenscourt Park
- No Chain

Hamlet Gardens, London, W6

Fifth Floor



Total area (approx.) 25.39 sq. m (273 sq. ft)