



Banim Street, W6

£350,000

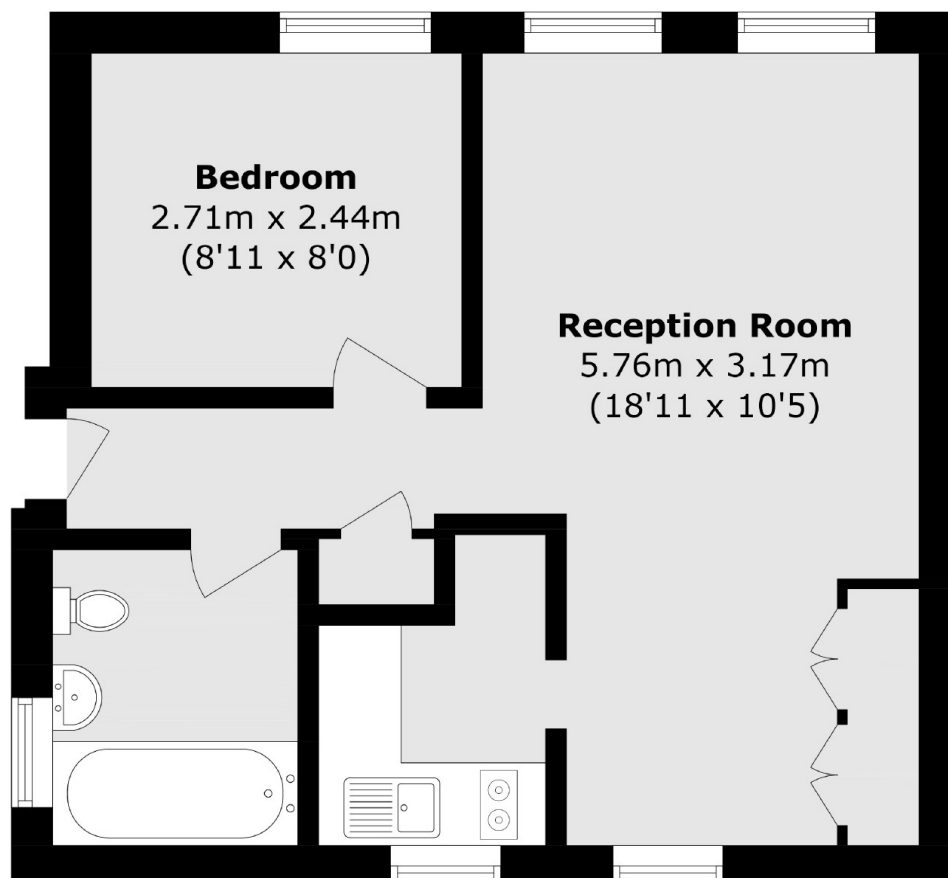
This delightful one bedroom purpose built flat has been kept in a lovely condition and is conveniently located within walking distance of the excellent transport links that Hammersmith provides. Offering lots of natural light due to the dual aspect of the windows throughout the reception this would make a wonderful home or investment.

Banim Street is moments away from not only Hammersmith Broadway but also Ravenscourt Park, Hammersmith Bridge and the amenities that King Street has to offer.

Features

- One Bedroom
- Share of Freehold
- Plenty of Natural Light
- Close To Amenities
- Fantastic Transport Links
- Ravenscourt Park

Banim Street, London, W6



Total area (approx.): 535.4 sq. m (381 sq. ft)

Dexters

Hammersmith
164-166 King Street
London
W6 0QU
Sales
020 8939 6061

Energy Rating: C. We aim to make our particulars both accurate and reliable. However they are not guaranteed; nor do they form part of an offer or contract. If you require clarification on any points then please contact us, especially if you're traveling some distance to view. Please note that appliances and heating systems have not been tested and therefore no warranties can be given as to their good working order.

 **RICS** | Regulated
Estate Agent
and Letting Agent

[dexters.co.uk](https://www.dexters.co.uk)