



Fulham Palace Road, W6

£439 Per week

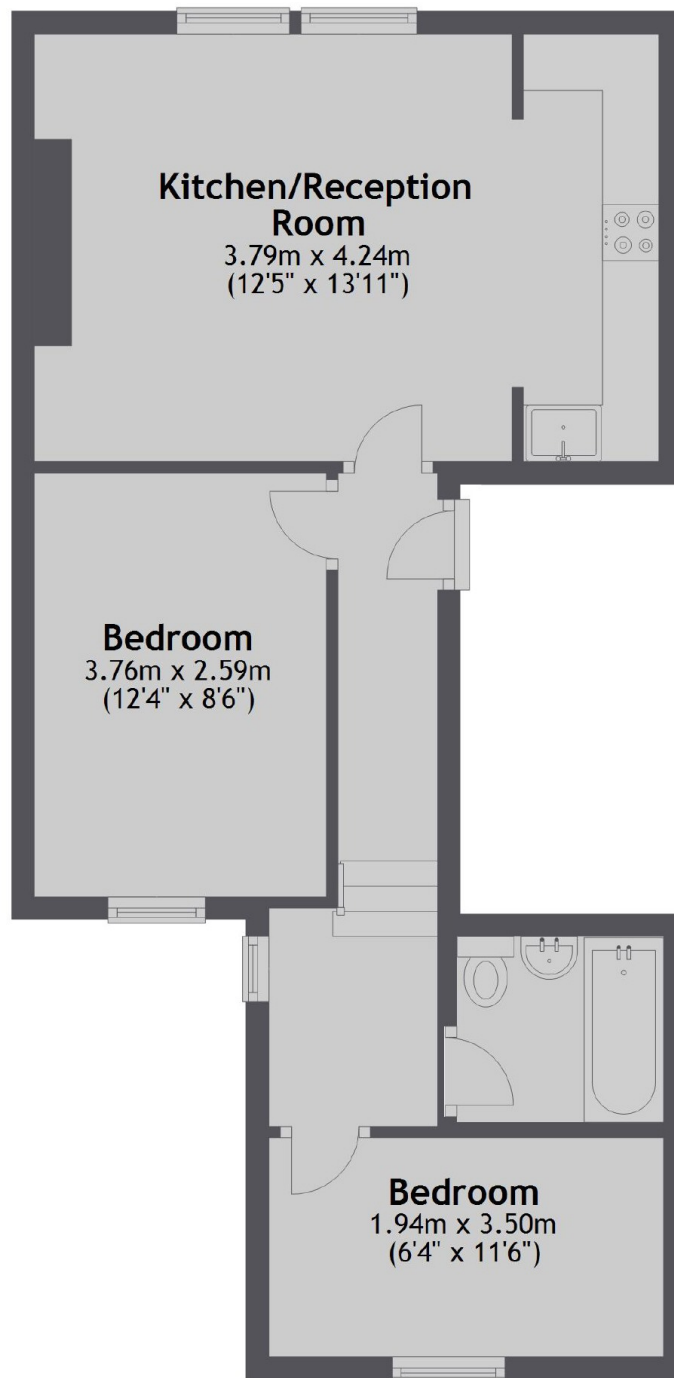
An opportunity to rent a two double bedroom apartment with large open plan reception in the centre of Hammersmith. Perfect for work from home tenants and professional sharers.

The property is located on Fulham Palace Road in Hammersmith and offers easy access to Hammersmith Station. The river walk is also within walking distance as are several local amenities.

Features

Two Bedrooms
Open Plan
Close To Tube
Top Floor
Period Conversion
River Thames Nearby

Fulham Palace Road,
London, W6



Total area: approx. 48.2 sq. metres (518.6 sq. feet)

Dexters

Hammersmith
164-166 King Street
London
W6 0QU
Lettings
020 8939 6062

Energy Rating: D. We aim to make our particulars both accurate and reliable. However they are not guaranteed; nor do they form part of an offer or contract. If you require clarification on any points then please contact us, especially if you're traveling some distance to view. Please note that appliances and heating systems have not been tested and therefore no warranties can be given as to their good working order.

 **RICS** | Regulated
Estate Agent
and Letting Agent

[dexters.co.uk](https://www.dexters.co.uk)