

Goldhawk Road, W6

£3,500 Per calendar month

An immaculately presented two bedroom penthouse apartment in the sought after Vitae development. This property is offered in excellent condition throughout and comprises of a spacious entrance hall, large open plan kitchen/reception room with high ceilings and French doors leading to a good-sized private terrace, modern kitchen with granite worktops and all modern appliances, two double bedrooms with great storage space en-suite bathrooms, access to private balcony and a guest WC. The property further benefits from under floor heating, wood flooring and a designated parking space.

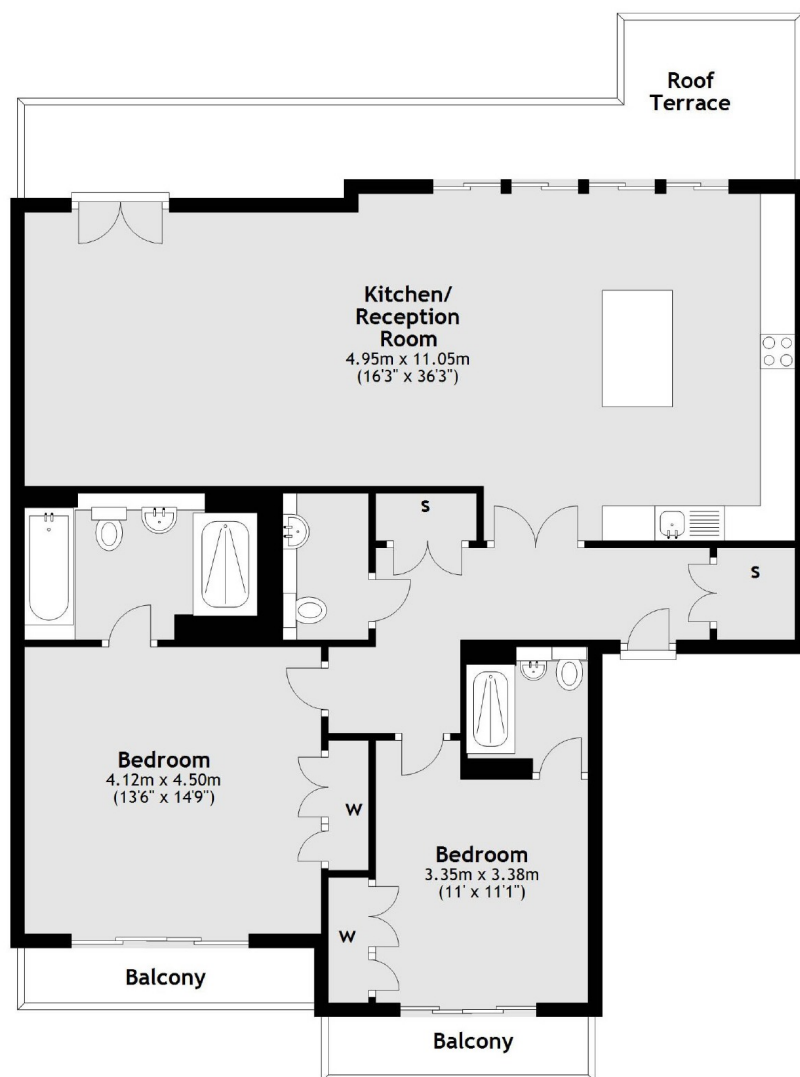
Located 0.3 miles from Stamford Brook tube station and 0.6 miles from Ravenscourt Park tube station, offering excellent access into Central London. Vitae Apartments is ideally located for easy access to Hammersmith, Chiswick and the A4/M4.

Features

- Penthouse Apartment
- Roof Terrace
- Private Balcony
- Underfloor Heating
- Allocated Parking
- High Ceilings

Goldhawk Road, London, W6

Third Floor



Dexters

Hammersmith
164-166 King Street
London
W6 0QU
Lettings
020 8939 6062

Energy Rating: C. We aim to make our particulars both accurate and reliable. However they are not guaranteed; nor do they form part of an offer or contract. If you require clarification on any points then please contact us, especially if you're traveling some distance to view. Please note that appliances and heating systems have not been tested and therefore no warranties can be given as to their good working order.

 **RICS** | Regulated
Estate Agent
and Letting Agent

[dexters.co.uk](https://www.dexters.co.uk)