



Fulham Palace Road, W6

£565 Per week

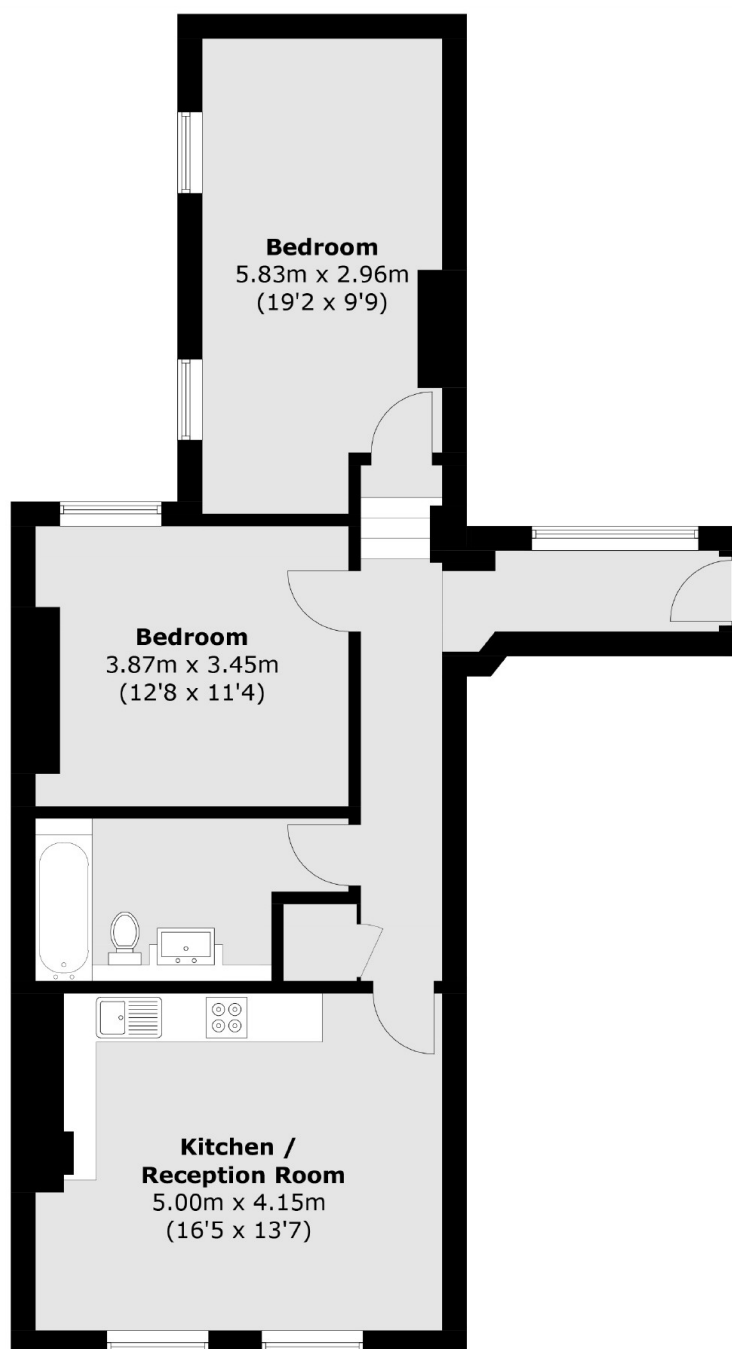
A spacious two bedroom apartment available to rent on Fulham Palace Road. Situated on the second floor with two good size double bedrooms, bright and large living/ kitchen area and a newly refurbished bathroom.

Fulham Palace Road is in walking distance to The Thames Path for delightful riverside walks and pubs. Barons Court and Hammersmith Broadway, including Hammersmith underground station are also within close proximity.

Features

- Great Size
- Two Double Bedrooms
- Second Floor
- Open Plan
- Furnished
- Modern Bathroom

Fulham Palace Road, London, W6



Total area (approx.): 70.7 sq. m (761.0 sq. ft)

Dexters

Hammersmith
164-166 King Street
London
W6 0QU
Lettings
020 8939 6062

Energy Rating: D. We aim to make our particulars both accurate and reliable. However they are not guaranteed; nor do they form part of an offer or contract. If you require clarification on any points then please contact us, especially if you're traveling some distance to view. Please note that appliances and heating systems have not been tested and therefore no warranties can be given as to their good working order.

 **RICS** | Regulated
Estate Agent
and Letting Agent

[dexters.co.uk](https://www.dexters.co.uk)