



Down Place, W6

£550,000

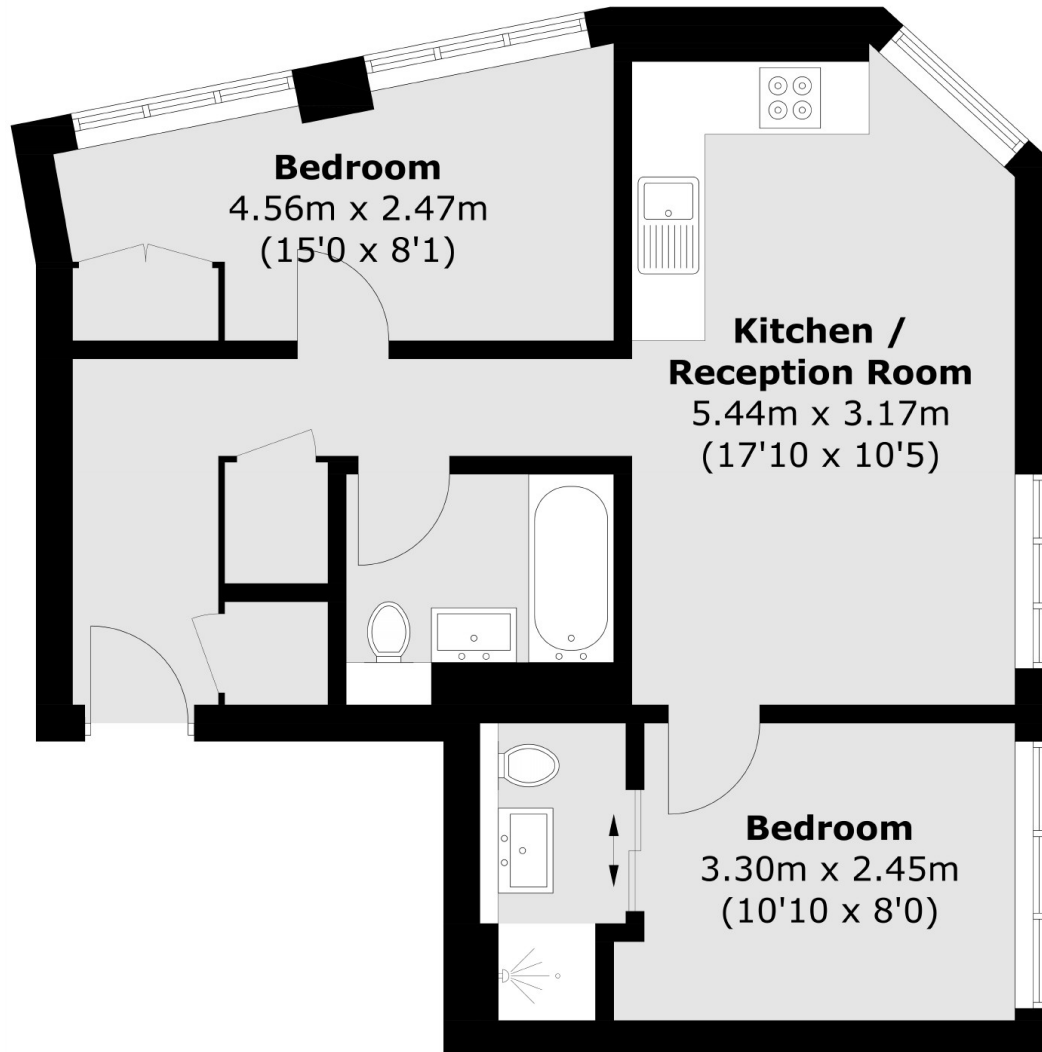
This newly built apartment is in the heart of Hammersmith. Finished to a high standard throughout, the property has two double bedrooms, two bathrooms and a large kitchen and living space with underfloor heating throughout.

Tucked away between King Street and the Riverside, with plenty of amenities to enjoy as well as the popular Thames Path. Hammersmith Broadway and A4/M4 access make it perfect for commuters.

Features

- Two Double Bedrooms
- Two Bathrooms
- Concierge
- Lift
- Heart Of Hammersmith
- Good Transport Links

Down Place, London, W6



Total area (approx.): 51.3 sq. m (552.2 sq. ft)

Dexters

Hammersmith
164-166 King Street
London
W6 0QU
Sales
020 8939 6061

Energy Rating: C. We aim to make our particulars both accurate and reliable. However they are not guaranteed; nor do they form part of an offer or contract. If you require clarification on any points then please contact us, especially if you're traveling some distance to view. Please note that appliances and heating systems have not been tested and therefore no warranties can be given as to their good working order.

 **RICS** | Regulated
Estate Agent
and Letting Agent

[dexters.co.uk](https://www.dexters.co.uk)