



Peabody Estate, W6

£519 Per week

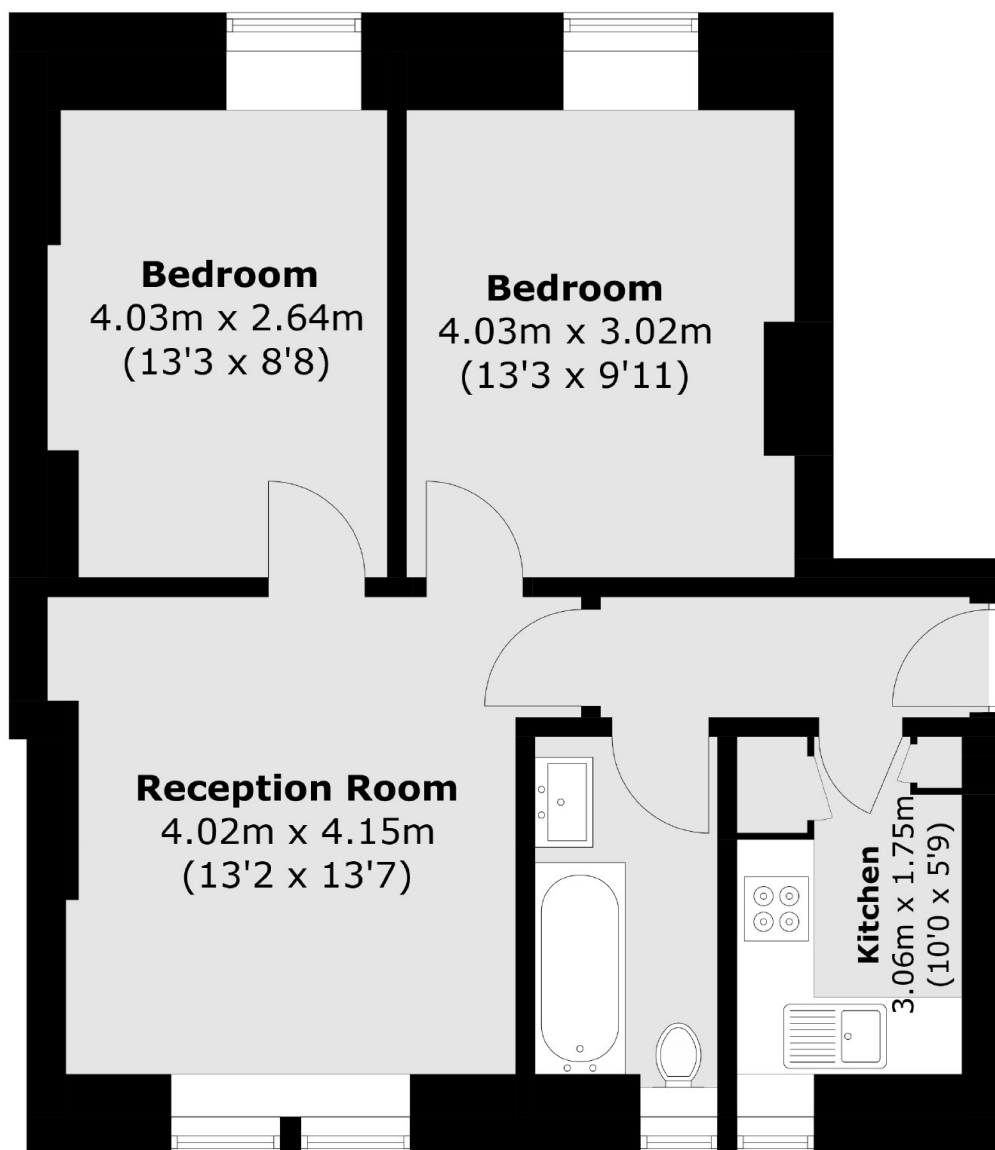
This well presented two bedroom flat is set within a private development, situated a short walk from Hammersmith Broadway. The property has two double bedrooms, a separate living reception with ample of space and one bathroom. There is a separate fully fitted kitchen. This flat would make a great home for a single professional, couple or sharers looking to be close to good transport links.

The amenities of Fulham Palace Road and Hammersmith Broadway are within a two minute walk, with easy access to the Piccadilly, District, Circle and Hammersmith & City Lines. The River Thames is within a few minutes walk from the property.

Features

- Two Bedrooms
- Natural Light
- Modern
- Separate Kitchen
- Good Transport Links
- Hammersmith Broadway

Peabody Estate, London, W6



Total area (approx.): 53.2 sq. m (572.6 sq. ft)