



## Hammersmith Grove, W6

£550,000

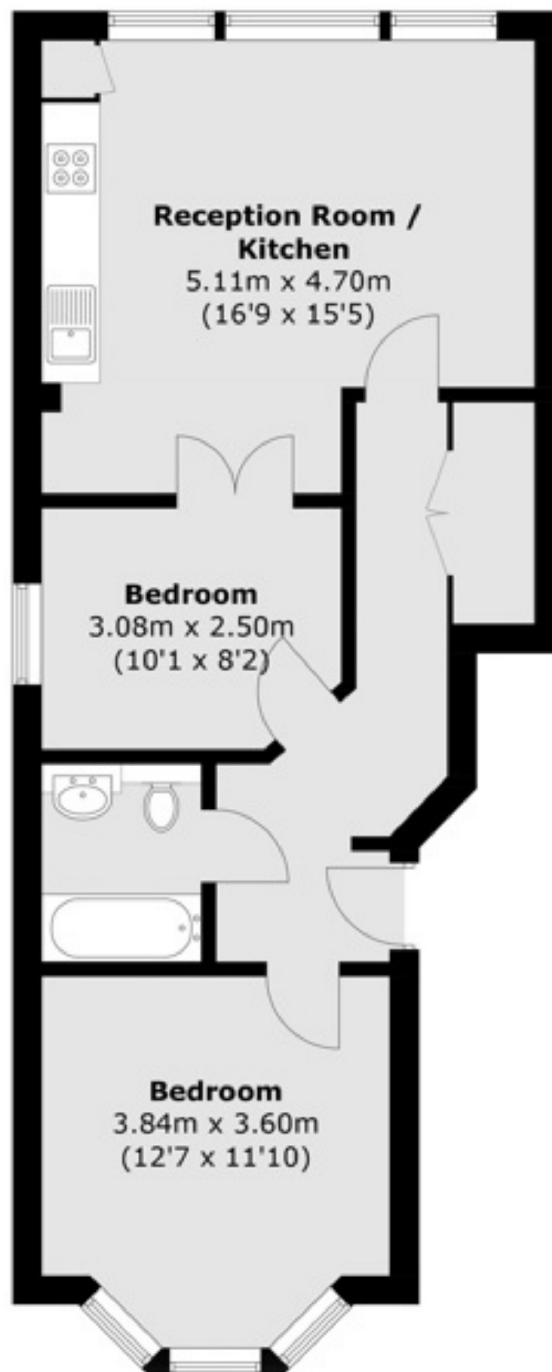
This charming two bedroom, raised ground floor period conversion is located in the heart of Brackenbury Village on the highly sought after Hammersmith Grove. Offering an abundance of natural light and idyllic views throughout the property it would make a wonderful home or investment.

Hammersmith Grove is a beautiful tree lined road with amenities on your door step. Hammersmith Broadway and Goldhawk Road stations offer access to the London Underground Service at either end of the road,

### Features

- Two Bedroom
- One Bathroom
- Abundance of Light
- Period Conversion
- Close To Amenities
- Close To Transport

# Hammersmith Grove, London, W6



**Raised Ground Floor**  
Total area (approx.): 57.96 sq.m (624 sq.ft)