



Iffley Road, W6

£1,900,000

This well presented four double bedroom family home is located on a tree lined street in the sought after Brackenbury Village, benefiting from an abundance of natural light thanks to a west facing rear garden and unobstructed views to the front.

Iffley Road is a quiet residential street with in easy walking distance to both Hammersmith and Shepherds Bush town centres offering great transport links as well as being on top of a range of amenities including shops, bars and restaurants as well as being conveniently located to multiple outstanding schools.

Features

- Four Bedrooms
- Three Bathrooms
- Meticulously Maintained
- Large Open Plan Kitchen Diner
- Dual Reception With Bay Window
- Chain Free



Iffley Road, W6

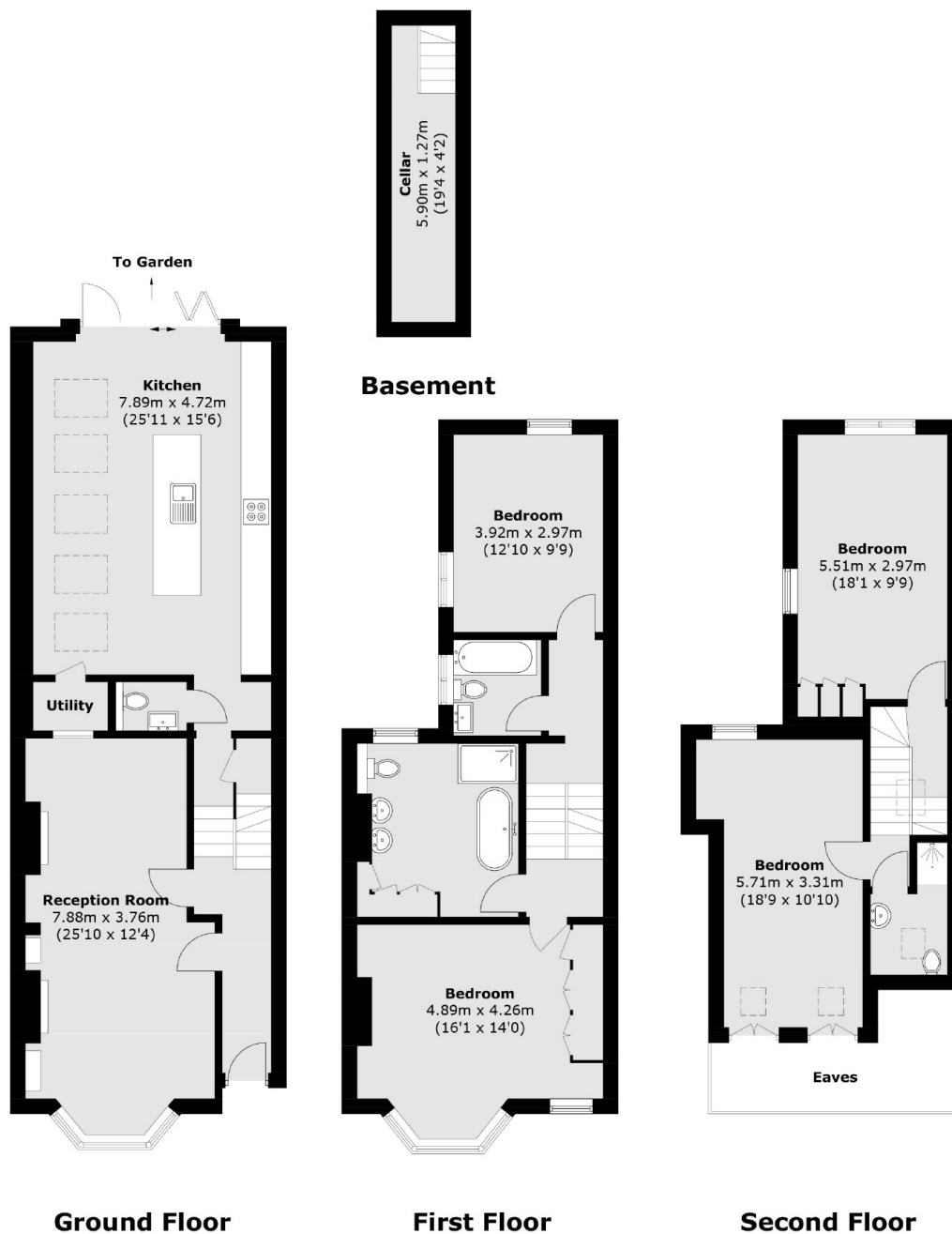
This meticulously maintained and modernised family home offers exceptional living space. The ground floor features a dual reception room at the front, benefiting from a large bay window with unobstructed views and abundant natural light. To the rear, the sprawling open-plan kitchen diner opens onto a larger-than-average west-facing garden through bi-fold doors. A W.C and utility room complete this level.

The first and second floors house the full-width master bedroom, a spacious four-piece family bathroom, three additional double bedrooms, and two further bathrooms.

The house further benefits from ample eaves storage as well as a cellar.



Iffley Road, London, W6



Total area (approx.): 178.4 sq. m (1,920.2 sq. ft)
(Excluding Eaves & Including Basement)

Dexters

Hammersmith
164-166 King Street
London
W6 0QU
Sales
020 8939 6061

Energy Rating: D. We aim to make our particulars both accurate and reliable. However they are not guaranteed; nor do they form part of an offer or contract. If you require clarification on any points then please contact us, especially if you're traveling some distance to view. Please note that appliances and heating systems have not been tested and therefore no warranties can be given as to their good working order.

 **RICS** | Regulated
Estate Agent
and Letting Agent

[dexters.co.uk](https://www.dexters.co.uk)