



Hauteville Court Gardens, W6

£1,000,000

This sprawling lateral mansion flat has been fully renovated throughout and measures in at over 1200sq ft, further benefiting from two balconies, communal grounds and a share of freehold.

Hauteville Court Gardens is perfectly positioned between Hammersmith and Chiswick and located right next to Stamford Brook Common as well as being moments away from Chiswick High Road for local amenities and Stamford Brook Station for great transport links.

Features

- Three Bedrooms
- Four Piece Bathroom
- Two Balconies
- Sprawling Reception Room
- Over 1200Sq Ft
- Chain Free.



Hauteville Court Gardens, W6

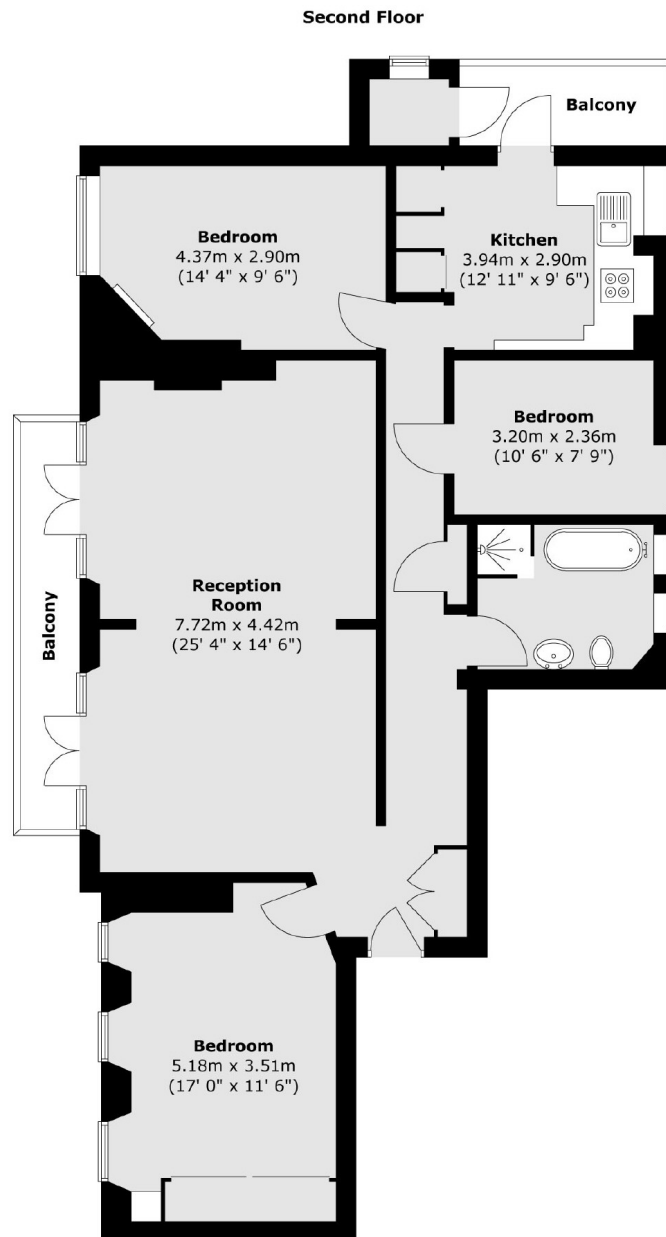
This amazing lateral flat, located on the second floor of a beautiful mansion block. The property features fantastic room proportions, with the living room as the centrepiece, enhanced by a large east-facing balcony that captures an abundance of natural sunlight.

The master bedroom is particularly spacious, featuring added width and built-in wardrobes. There are two additional bedrooms, the second is a generously sized double bedroom, and the third is perfect as a child's room or study.

The flat also includes a four-piece family bathroom and a great-sized kitchen diner with a south-facing balcony.



Hauteville Court Gardens, London, W6



Total area (approx.) : 103.5 sq. m (1114 sq. ft)
Total store area (approx.) : 1.2 sq. m (13 sq. ft)
Total balcony area (approx.) : 7.8 sq. m (84 sq. ft)