

## Civic Avenue, W6

£577 Per week

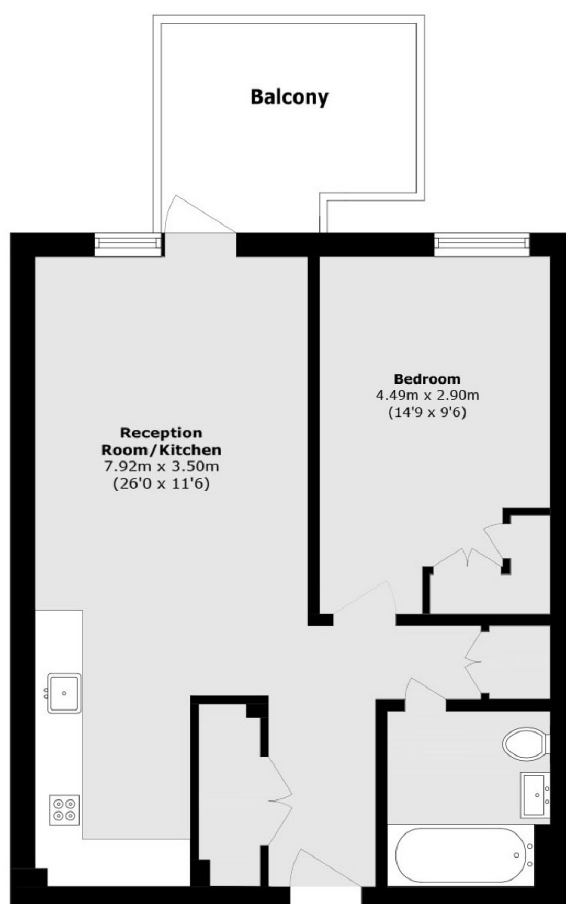
An exciting opportunity to rent a brand new one bedroom apartment in an excellent newly built development in Hammersmith. The apartment has a large private balcony accessible from spacious open plan living and kitchen area, consisting of high specification integrated appliances. The bedroom is large and has built-in wardrobes. There is a modern bathroom with shower over bathtub and there is ample storage throughout the apartment. Further benefits include an on-site concierge, residents gym and communal roof terrace with stunning views of the River Thames.

Ellen Craft Apartments form part of the new Artisi Development in Hammersmith. Located within a few minutes walk to both Ravenscourt Park and Hammersmith Stations and with quick access to the River Thames and Furnivall Gardens.

### Features

- Brand New
- Large Private Balcony
- Built-In Storage
- High Specification
- Secure Video-Entry
- Concierge

# Civic Avenue, London, W6



Total area (approx.): 51.3 sq. m (552.1 sq. ft)

Balcony area (approx.): 7.8 sq. m (83.9 sq. ft)