



Colwith Road, W6

£7,000 Per calendar month

SHORT LET. An immaculately presented three bedroom house with an additional study room and private garden in the popular Crabtree area of Hammersmith.

Colwith Road is located within a few minutes walk to the River Thames and in close proximity to the many amenities of Fulham Palace Road and Hammersmith Broadway.

Features

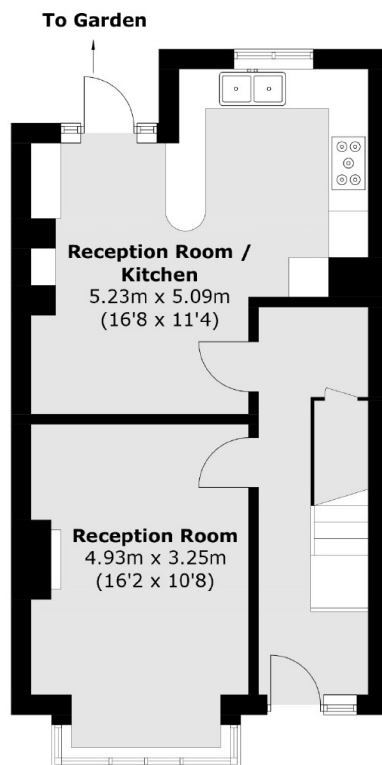
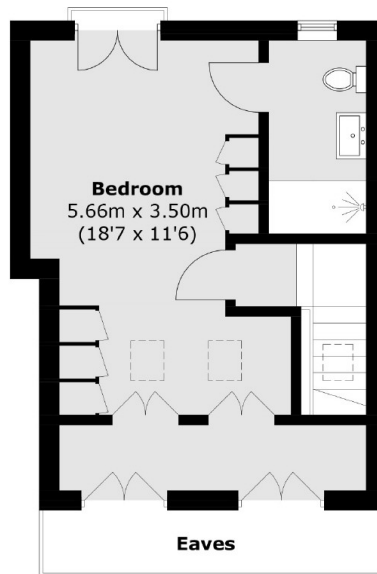
- Three Bedrooms
- Additional Study
- Private Garden
- En-Suite Master Bedroom
- Juliet Balcony
- River Thames



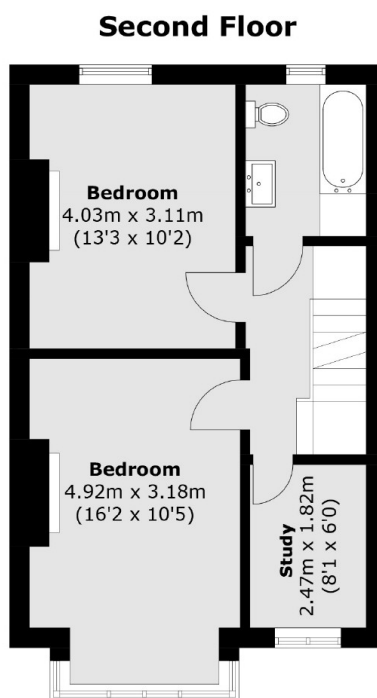
Colwith Road, W6



Colwith Road, London, W6



Ground Floor



First Floor

Total area (approx.): 124.8 sq. m (1,343.3 sq. ft)
(Excluding Eaves)