



Castelnau Gardens, SW13

£725,000

This charming apartment within an attractive Victorian mansion block has lateral space which includes two double bedrooms, an eat-in kitchen and large reception room, with plenty of period features throughout.

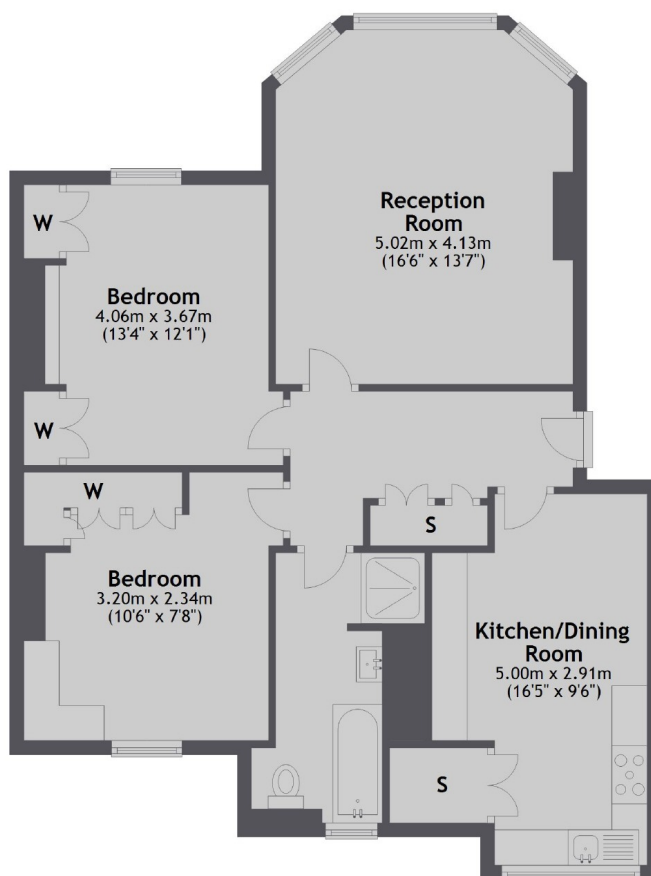
Castelnau Gardens is near Hammersmith Bridge with some picturesque pathways along the Thames. Barnes Village is to the South, and Hammersmith Broadway offers four underground lines.

Features

- Two Double Bedrooms
- First Floor
- Eat-In Kitchen
- Lateral Space
- Victorian Features
- Barnes Riverside

Castelnau Gardens, London, SW13

First Floor



Total area: approx. 81.1 sq. metres (873.0 sq. feet)