



Down Place, W6

£550,000

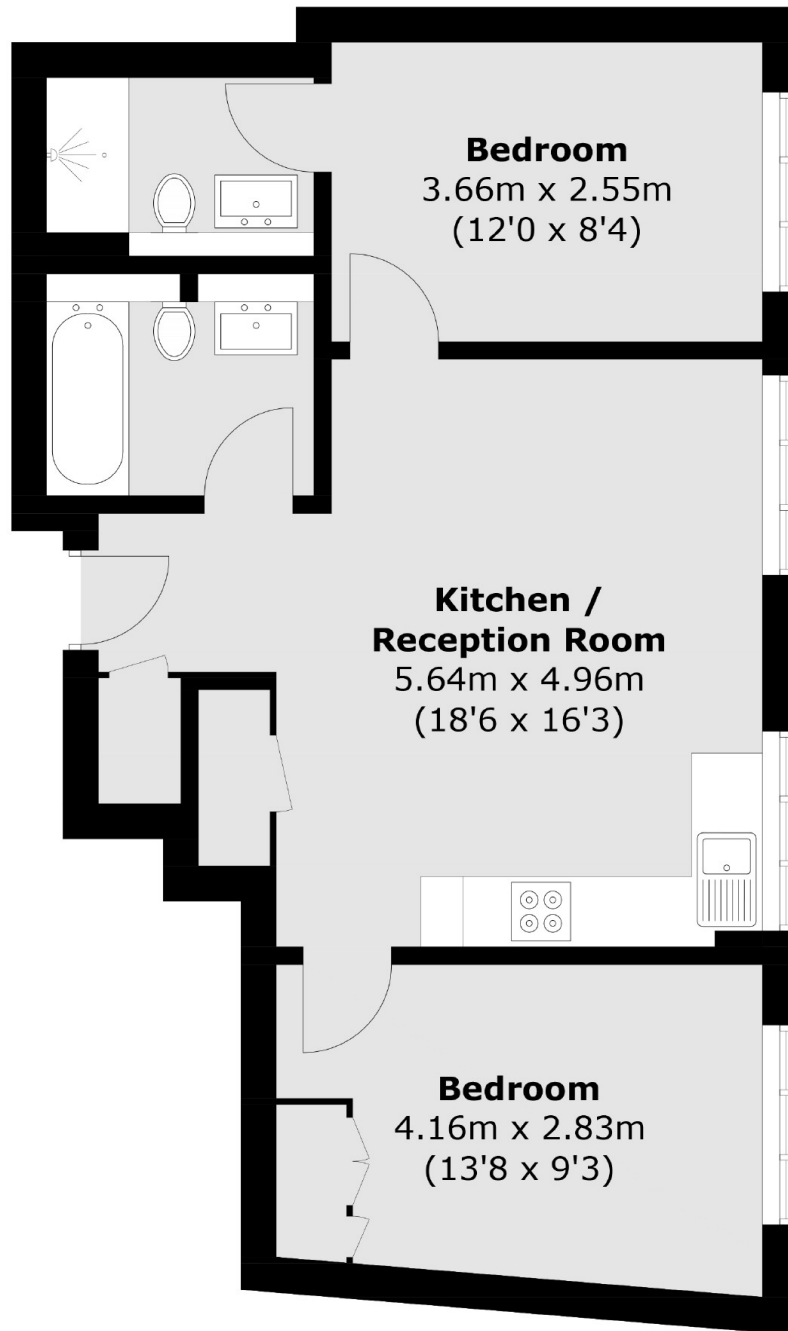
This modern built two bedroom apartment is in excellent condition. With an open plan kitchen living space and two bathrooms, this flat would be a wonderful home or investment.

Tucked away between King Street and the Riverside, with plenty of amenities to enjoy as well as the popular Thames Path. Hammersmith Broadway and A4/M4 access make it perfect for commuters.

Features

- Two Bedrooms
- Two Bathrooms
- Modern Finish
- Concierge
- Lift
- Hammersmith Broadway

Down Place, London, W6



Total area (approx.): 54.6 sq. m (587.7 sq. ft)

Dexters

Hammersmith
164-166 King Street
London
W6 0QU
Sales
020 8939 6061

Energy Rating: C. We aim to make our particulars both accurate and reliable. However they are not guaranteed; nor do they form part of an offer or contract. If you require clarification on any points then please contact us, especially if you're traveling some distance to view. Please note that appliances and heating systems have not been tested and therefore no warranties can be given as to their good working order.

 **RICS** | Regulated
Estate Agent
and Letting Agent

[dexters.co.uk](https://www.dexters.co.uk)