



## Fulham Palace Road, W6

### £550,000

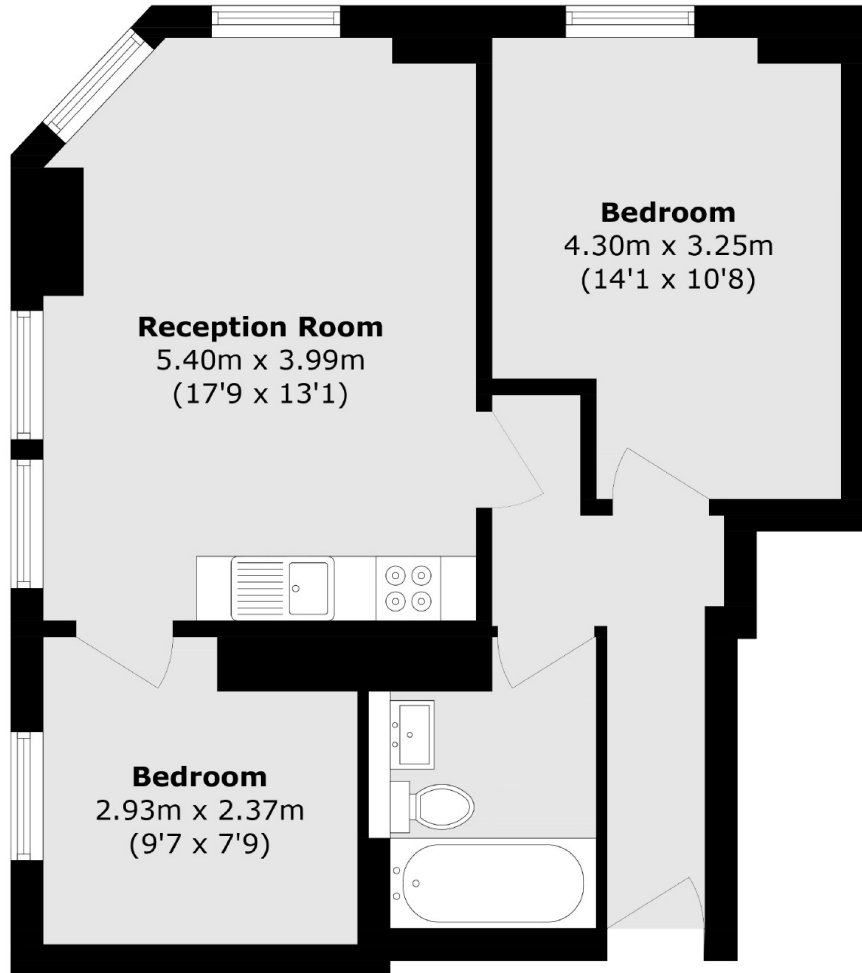
A spacious and bright two double bedroom apartment in a popular residential area. Situated on the first floor this property has been fully renovated to a high standard with the addition of double glazed windows and ample storage space.

Fulham Palace Road is in walking distance to The Thames Path for delightful riverside walks and pubs. Barons Court and Hammersmith Broadway, including Hammersmith underground station are also within close proximity.

### Features

- First Floor
- Two Bedrooms
- Fully Renovated
- Double Glazed Window
- Close To Transport
- Chain Free

# Fulham Palace Road, London, W6



Total area (approx.): 57.0 sq. m (613.5 sq. ft)