

Crisp Road, W6

£890,000

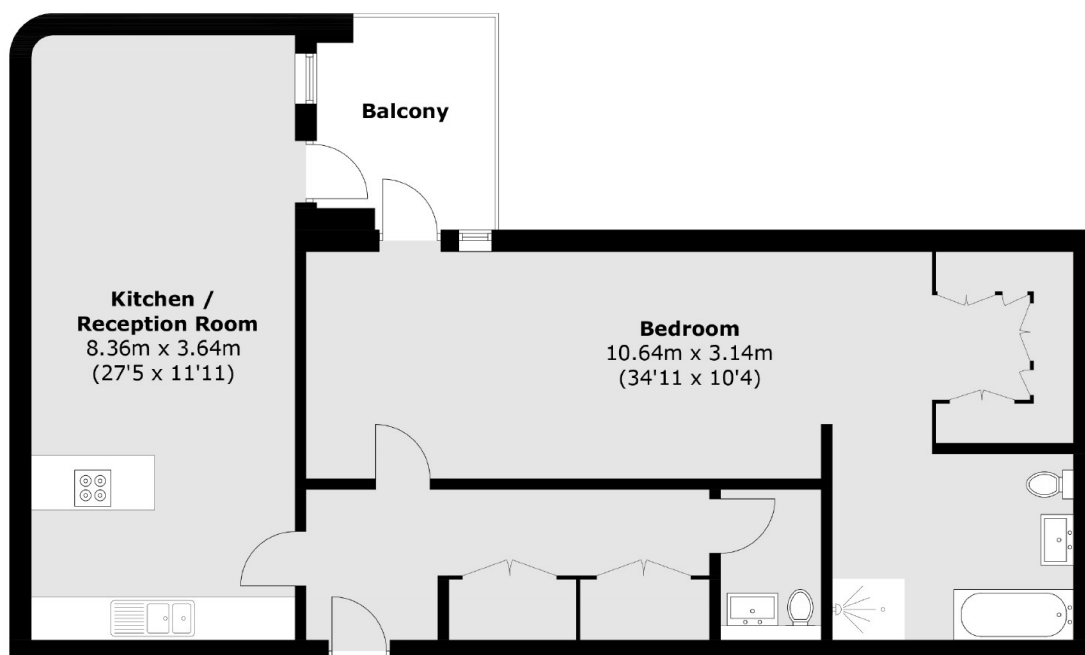
A stunning one bedroom apartment in the new riverside development Queen's Wharf. The property has a stylish open plan living area with an integrated kitchen, a large master bedroom with en-suite a private balcony offering river views.

Queens Wharf residents benefit from a 24-hour dedicated concierge, a rooftop terrace, and an on-site restaurant, bar and café.. Hammersmith station is a short walk away.

Features

Riverside Development
One Bedroom Apartment
Master En Suite
Open Plan Living Area
24-hr Concierge
Winter Garden

Crisp Road, London, W6



Total area (approx.): 88.5 sq. m (952.6 sq. ft)
Balcony area: 7.2 sq. m (77.5 sq. ft)

Dexters

Hammersmith
164-166 King Street
London
W6 0QU
Sales
020 8939 6061

Energy Rating: B. We aim to make our particulars both accurate and reliable. However they are not guaranteed; nor do they form part of an offer or contract. If you require clarification on any points then please contact us, especially if you're traveling some distance to view. Please note that appliances and heating systems have not been tested and therefore no warranties can be given as to their good working order.

 **RICS** | Regulated
Estate Agent
and Letting Agent

[dexters.co.uk](https://www.dexters.co.uk)