

Crisp Road, W6

£950,000

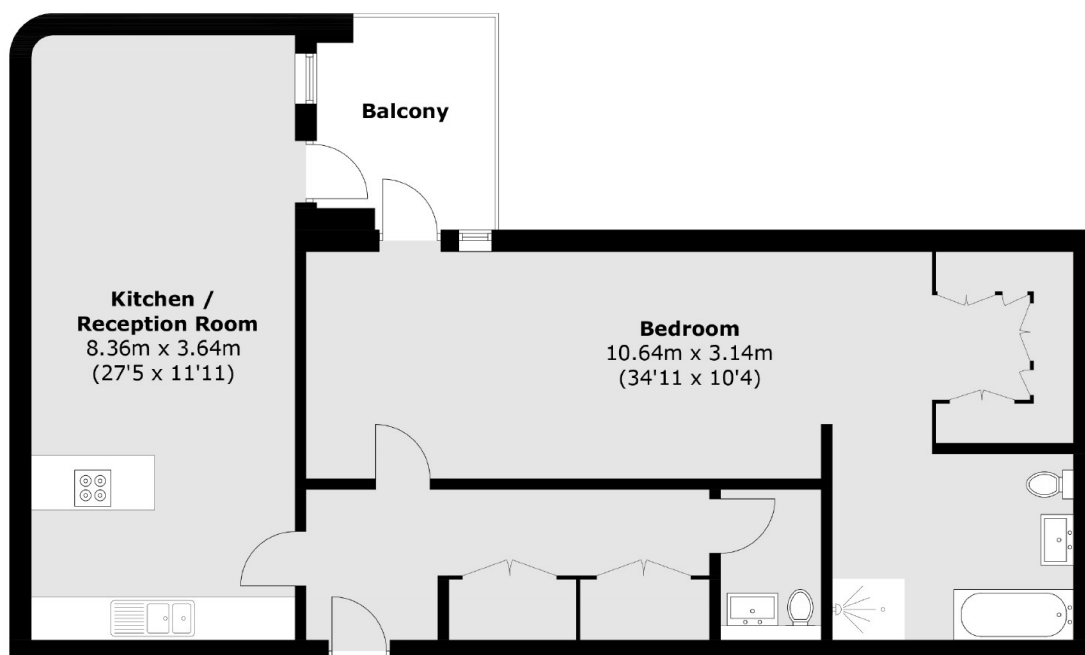
A stunning one bedroom apartment in the new riverside development Queen's Wharf. The property has a stylish open plan living area with an integrated kitchen, a large master bedroom with en-suite a private balcony offering river views.

Queens Wharf residents benefit from a 24-hour dedicated concierge, a rooftop terrace, and an on-site restaurant, bar and café.. Hammersmith station is a short walk away.

Features

Riverside Development
One Bedroom Apartment
Master En Suite
Open Plan Living Area
24-hr Concierge
Winter Garden

Crisp Road, London, W6



Total area (approx.): 88.5 sq. m (952.6 sq. ft)
Balcony area: 7.2 sq. m (77.5 sq. ft)